

14'/16' GLEN ABBY



STANDARD SPECIFICATIONS

14' BIRCHWOOD GLEN ABBEY

All homes represented here are built to CSA, A-277 code

EXTERIOR

Roofline: 3.25/12 pitch partially hinged
Vinyl siding with louvered shutters (front & curbside windows)
Exterior wall sheathing (glued & fastened)
Color co-ordinated asphalt shingled roof
30 lb. Felt eave protection
15 lb. Roof felt underlayment
Perimeter eave venting system
Tubular steel frame with hitch
2 x 6 walls with 3 interior & 2 exterior belt rails
2 x 8 floor joists
Continuous double header system
GFI electrical receptacle
Frost free tap
Separate receptacle for heat tape in HWT cavity
Illuminated door chimes front & rear doors
Porch light at all exterior doors

INTERIOR

13/16" floor decking (glued & screwed)
Insulation: Ceiling R-33
Floor R-28
Walls R-20
½" stippled c.d. gyproc ceilings
Pre-finished decorative wall panel
Cathedral ceiling: living room, dining room & kitchen, minimum
CMHC approved vinyl flooring (full glue & rolled)
CMHC approved carpet living room & master bedroom
Copper wiring throughout
Electric smoke alarms
Atmospheric gas furnace with electronic ignition
40 gallon Natural Gas HWT
100 amp electric service panel
Electrical conduit through floor
Water heater pan

UTILITY ROOM

Plumbed for washer, wired for dryer
Dryer vent installed

WINDOWS

PVC windows & sills complete with screen

WINDOW COVERINGS

Valance & mini blinds all bedrooms kitchen and dining area
Valance and side panels complete with sheer and mini-blinds in living room and formal dining

DOORS

36" insulated front door with peephole & dead bolt
32" insulated rear door with peephole & dead bolt (where applicable)
Pre-finished Oak interior doors

KITCHEN

30" range with clock
18 cubic ft. frost free fridge
Power range hood
Double stainless steel kitchen sink
Laminated counter tops with executive edge
Single row decorator tile back splash
Roller drawer hardware
Module cabinets with backs and adjustable shelves
Crown molding
PVC cabinet doors throughout with color choices of Forest Oak, White & Maple

BATHROOMS

GFI circuit
Dehumidstat on main bath fan
1 piece walled tub/shower main & ensuite
White tubs, toilets & vanity sinks
Chrome towel bar & paper holder
White vinyl shower curtain
Hollywood light & mirror above vanity(s)
Shut off valves at all toilet locations
Pressure balanced taps at all tubs & showers

MISCELLANEOUS

Living room wired for ceiling fan with separate light switch
Bedroom ceiling lights
Light above kitchen sink
Light bulb package throughout
Washerless faucets
Wire closet shelving throughout

Triple M Housing Ltd. has an unsurpassed commitment to product improvement and quality. In order to meet and exceed market demands, Triple M reserves the right to modify plans, specifications and features at any time and without prior notice. Due to design, provincial or state requirements, some variance in standard features may occur. Please see your Triple M Retailer for more information. NOTE: All square footage sizes are approximate .January, 2002

STANDARD SPECIFICATIONS 16' BIRCHWOOD GLEN ABBEY

All homes represented here are built to CSA, A-277 code

EXTERIOR

Roofline: 4 1/2 pitch partially hinged
Vinyl siding with louvered shutters (front & curbside windows)
Exterior wall sheathing (glued & fastened)
Color co-ordinated asphalt shingled roof
30 lb. Felt eave protection is required
(option outside Alberta & Saskatchewan)
Perimeter eave venting system
Tubular steel frame with hitch
2 x 6 walls with 3 interior & 2 exterior belt rails
2 x 10 floor joists
Continuous double header system
GFI electrical receptacle
Frost free tap
Separate receptacle for heat tape in HWT cavity
Illuminated door chimes front & rear doors
Porch light at all exterior doors

INTERIOR

13/16" floor decking (glued & screwed)
Insulation: Ceiling R-33
Floor R-28
Walls R-20
1/2" stippled c.d. gyproc ceilings
Pre-finished decorative wall panel
Cathedral ceiling: living room, dining room & kitchen, minimum
CMHC approved vinyl flooring (full glue & rolled)
CMHC approved carpet living room & master bedroom
Copper wiring throughout
Electric smoke alarms
Atmospheric gas furnace with electronic ignition
40 gallon Natural Gas HWT
100 amp electric service panel
Electrical conduit through floor

UTILITY ROOM

Plumbed for washer, wired for dryer
Dryer vent installed

WINDOWS

PVC windows & sills complete with screen

WINDOW COVERINGS

Valance & mini blinds all bedrooms kitchen and dining area
Valance and side panels complete with sheer and mini-blinds in living room and formal dining

DOORS

36" insulated front door with peephole & dead bolt
32" insulated rear door with peephole & dead bolt
(where applicable)
Pre-finished Oak interior doors

KITCHEN

30" range with clock
18 cubic ft. frost free fridge
Power range hood
Double stainless steel kitchen sink
Laminated counter tops with executive edge
Single row decorator tile back splash
Roller drawer hardware
Module cabinets with backs and adjustable shelves
Crown molding
PVC cabinet doors throughout with color choices of Forest Oak, White & Maple

BATHROOMS

GFI circuit
Dehumidstat on main bath fan
1 piece walled tub/shower main & ensuite
White tubs, toilets & vanity sinks
Chrome towel bar & paper holder
White vinyl shower curtain
Hollywood light & mirror above vanity(s)
Shut off valves at all toilet locations
Pressure balanced taps at all tubs & showers

MISCELLANEOUS

Living room wired for ceiling fan with separate light switch
Bedroom ceiling lights
Light above kitchen sink
Light bulb package throughout
Washerless faucets
Wire closet shelving throughout

Triple M Housing Ltd. has an unsurpassed commitment to product improvement and quality. In order to meet and exceed market demands, Triple M reserves the right to modify plans, specifications and features at any time and without prior notice. Due to design, provincial or state requirements, some variance in standard features may occur. Please see your Triple M Retailer for more information. NOTE: All square footage sizes are approximate .January, 2002

STANDARD SPECIFICATIONS

14' DUTCH VILLA GLEN ABBEY

All homes represented here are built to CSA, A-277 code

EXTERIOR

Roofline: 3.25/12 pitch partially hinged
Vinyl siding with raised panel shutters (front & curbside windows)
Exterior wall sheathing (glued & fastened)
Color co-ordinated asphalt shingled roof
30 lb. Felt eave protection
15 lb. Roof felt underlayment
Perimeter eave venting system
Tubular steel frame with hitch
2 x 6 walls with 3 interior & 2 exterior belt rails
2 x 8 floor joists
Continuous double header system
GFI electrical receptacle
Frost free tap
Separate receptacle for heat tape in HWT cavity
Illuminated door chimes front & rear doors
Porch light at all exterior doors

INTERIOR

13/16" floor decking (glued & screwed)
Insulation: Ceiling R-33
Floor R-28
Walls R-20
½" stippled c.d. gyproc ceilings
Pre-finished decorative wall panel
Cathedral ceiling: living room, dining room & kitchen. minimum
CMHC approved vinyl flooring (full glue & rolled)
CMHC approved carpet living room & master bedroom
Copper Wiring throughout
Electric smoke alarms
Atmospheric gas furnace with electronic ignition
40 gallon Natural Gas HWT
100 amp electric service panel
Electrical conduit through floor
Water heater pan

UTILITY ROOM

Plumbed for washer, wired for dryer
Dryer vent installed

WINDOWS

PVC windows & sills complete with screen

WINDOW COVERINGS

Valance & mini blinds all bedrooms kitchen and dining area
Valance and side panels complete with sheer and mini blinds in living room and formal dining

DOORS

36" insulated front door with peephole & dead bolt
32" insulated rear door with peephole & dead bolt (where applicable)
Pre-finished Oak interior doors

KITCHEN

30" range with clock
18 cubic ft. frost free fridge
Power range hood
Double stainless steel kitchen sink
Laminated counter tops with executive edge
Single row decorator tile back splash
Roller drawer hardware
Module cabinets with backs and adjustable shelves
Crown molding
PVC cabinet doors throughout with color choices of Forest Oak, White & Maple

BATHROOMS

GFI circuit
Dehumidstat on main bath fan
1 piece walled tub/shower main & ensuite
White tubs, toilets & vanity sinks
Chrome towel bar & paper holder
White vinyl shower curtain
Hollywood light & mirror above vanity(s)
Shut off valves at all toilet locations
Pressure balanced taps at all tubs & showers

MISCELLANEOUS

Living room wired for ceiling fan with separate light switch
Bedroom ceiling lights
Light above kitchen sink
Light bulb package throughout
Washerless faucets
Wire closet shelving throughout

Triple M Housing Ltd. has an unsurpassed commitment to product improvement and quality. In order to meet and exceed market demands, Triple M reserves the right to modify plans, specifications and features at any time and without prior notice. Due to design, provincial or state requirements, some variance in standard features may occur. Please see your Triple M Retailer for more information. NOTE: All square footage sizes are approximate .January, 2002

STANDARD SPECIFICATIONS

16' DUTCH VILLA GLEN ABBEY

All homes represented here are built to CSA, A-277 code

EXTERIOR

Roofline: 4/12 pitch partially hinged
Vinyl siding with raised panel shutters (front & curbside windows)
Exterior wall sheathing (glued & fastened)
Color co-ordinated asphalt shingled roof
30 lb Felt Eave Protection is required (Option outside Alberta & Saskatchewan)
Perimeter eave venting system
Tubular steel frame with hitch
2 x 6 walls with 3 interior & 2 exterior belt rails
2 x 10 floor joists
Continuous double header system
GFI electrical receptacle
Frost free tap
Separate receptacle for heat tape in HWT cavity
Illuminated door chimes front & rear doors
Porch light at all exterior doors

INTERIOR

13/16" floor decking (glued & screwed)
Insulation: Ceiling R-33
Floor R-28
Walls R-20
½" stippled c.d. gyproc ceilings
Pre-finished decorative wall panel
Cathedral ceiling: living room, dining room & kitchen, minimum
CMHC approved vinyl flooring (full glue & rolled)
CMHC approved carpet living room & master bedroom
Copper wiring throughout
Electric smoke alarms
Atmospheric gas furnace with electronic ignition
40 gallon Natural Gas HWT
100 amp electric service panel
Electrical conduit through floor

UTILITY ROOM

Plumbed for washer, wired for dryer
Dryer vent installed

WINDOWS

PVC windows & sills complete with screen

WINDOW COVERINGS

Valance & mini blinds all bedrooms kitchen and dining area
Valance and side panels complete with sheer and mini-blinds in living room and formal dining

DOORS

36" insulated fl-ant door with peephole & dead bolt
32" insulated rear door with peephole & dead bolt (where applicable)
Pre-finished Oak interior doors

KITCHEN

30" range with clock
18 cubic ft. frost free fridge
Power range hood
Double stainless steel kitchen sink
Laminated counter tops with executive edge
Single row decorator tile back splash
Roller drawer hardware
Module cabinets with backs and adjustable shelves
Crown molding
PVC cabinet doors throughout with color choices of Forest Oak, White & Maple

BATHROOMS

GFI circuit
Dehumidstat on main bath fan
1 piece walled tub/shower main & ensuite
White tubs, toilets & vanity sinks
Chrome towel bar & paper holder
White vinyl shower curtain
Hollywood light & mirror above vanity(s)
Shut off valves at all toilet locations
Pressure balanced taps at all tubs & showers

MISCELLANEOUS

Living room wired for ceiling fan with separate light switch
Bedroom ceiling lights
Light above kitchen sink
Light bulb package throughout
Washerless faucets
Wire closet shelving throughout

Triple M Housing Ltd. has an unsurpassed commitment to product improvement and quality. In order to meet and exceed market demands, Triple M reserves the right to modify plans, specifications and features at any time and without prior notice. Due to design, provincial or state requirements, some variance in standard features may occur. Please see your Triple M Retailer for more information. NOTE: All square footage sizes are approximate .January, 2002

GLEN ABBY SERIES

14' WIDE

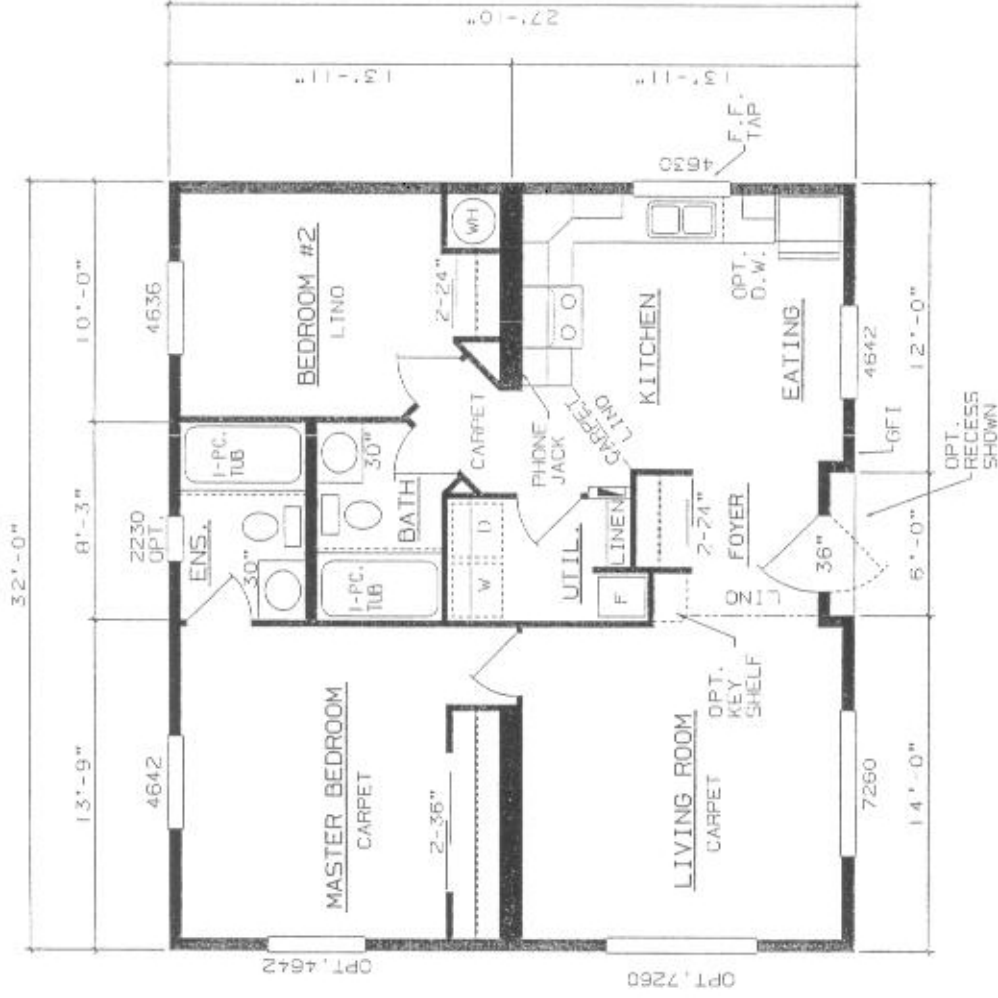
MODEL #		SQ. FT.	# BEDRMS	# BATHS	
ASHCROFT	7014-101	864	2	1	
CHARLESTON	7014-102	864	2	2	
HILLCREST	7014-104	845	3	2	
HUNTINGTON	7014-105	845	2	2	

16' WIDE

MODEL #		SQ. FT.	# BEDRMS	# BATHS	
INVERNESS	8016-101	1147	3	2	
JENNINGS	8016-102	1147	3	2	
MONTGOMERY	8016-103	1147	3	2	
RIVERDALE	8016-104	1110	3	2	
SHREVEPORT	8016-105	1110	3	2	



ASHCROFT
MODEL: 7014-101



CHARLESTON MODEL: 7014-102



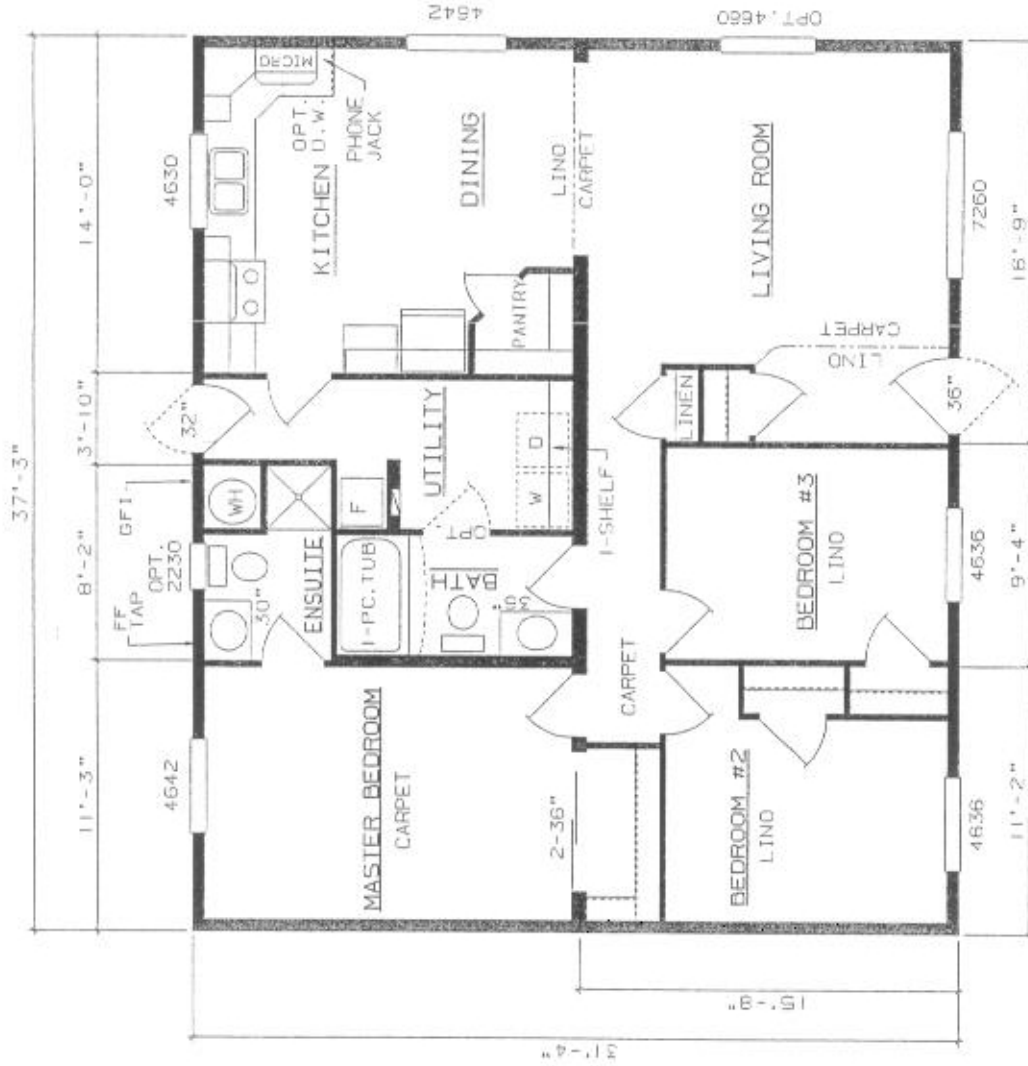
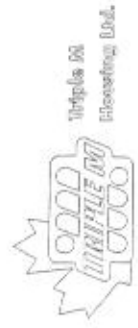


HILLCREST MODEL: 7014-104

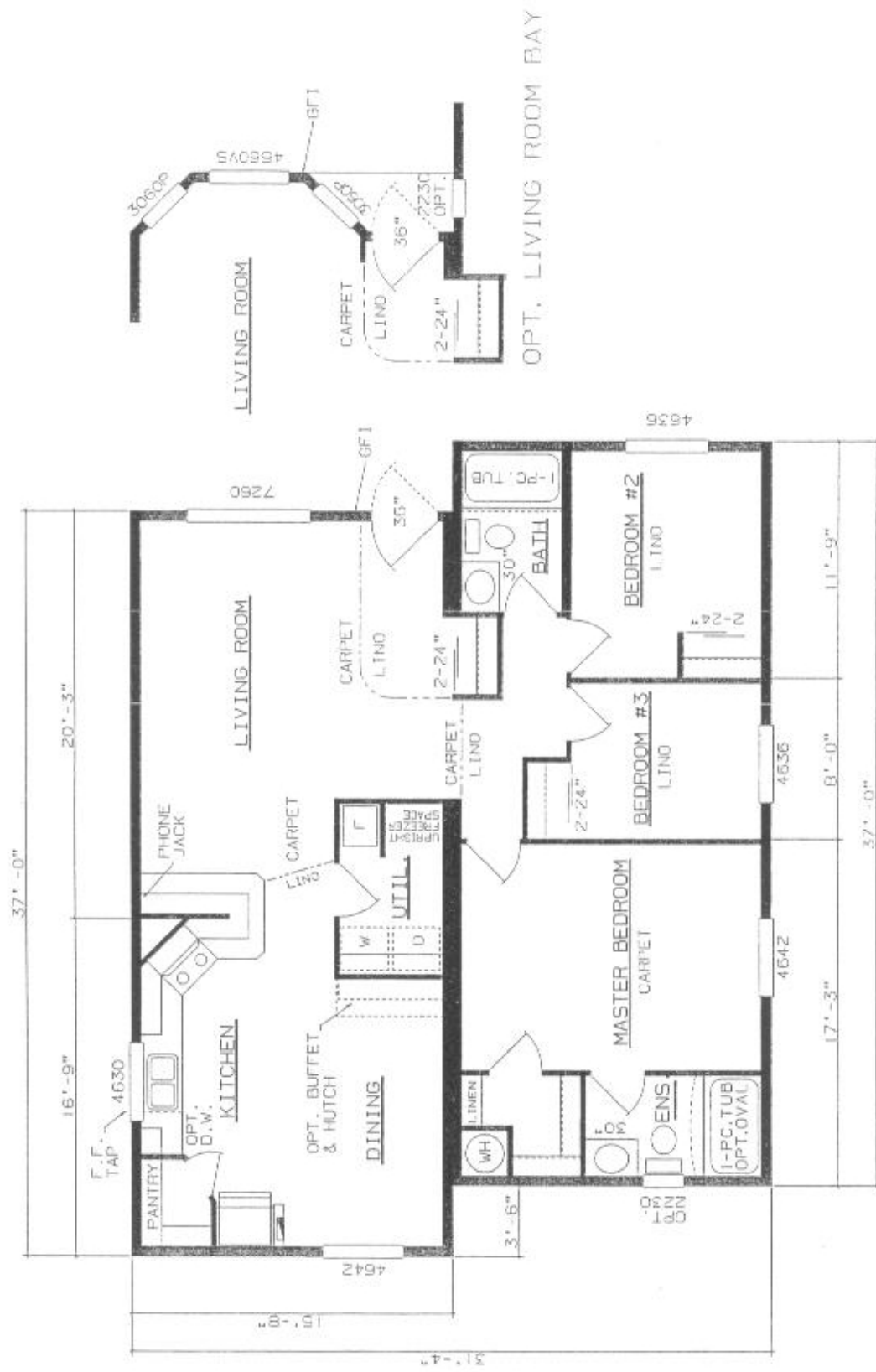


1. *Thyridopteryx* 56a
 2. *Thyridopteryx* 56b

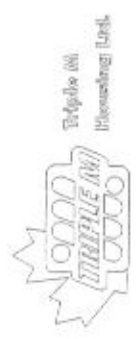
HUNTINGTON MODEL: 7014-105



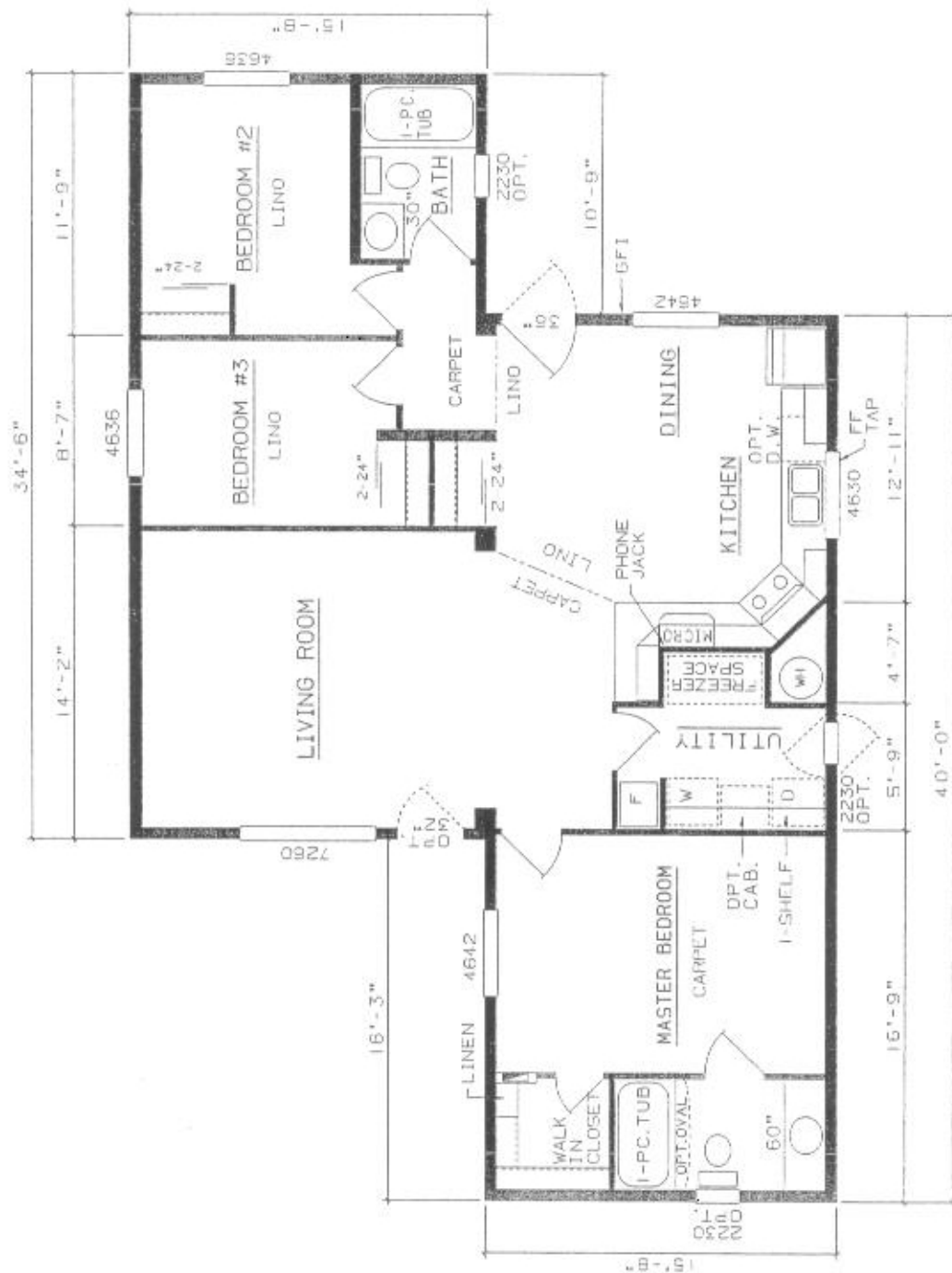
INVERNESS MODEL: 8016-101



JENNINGS MODEL: 8016-102

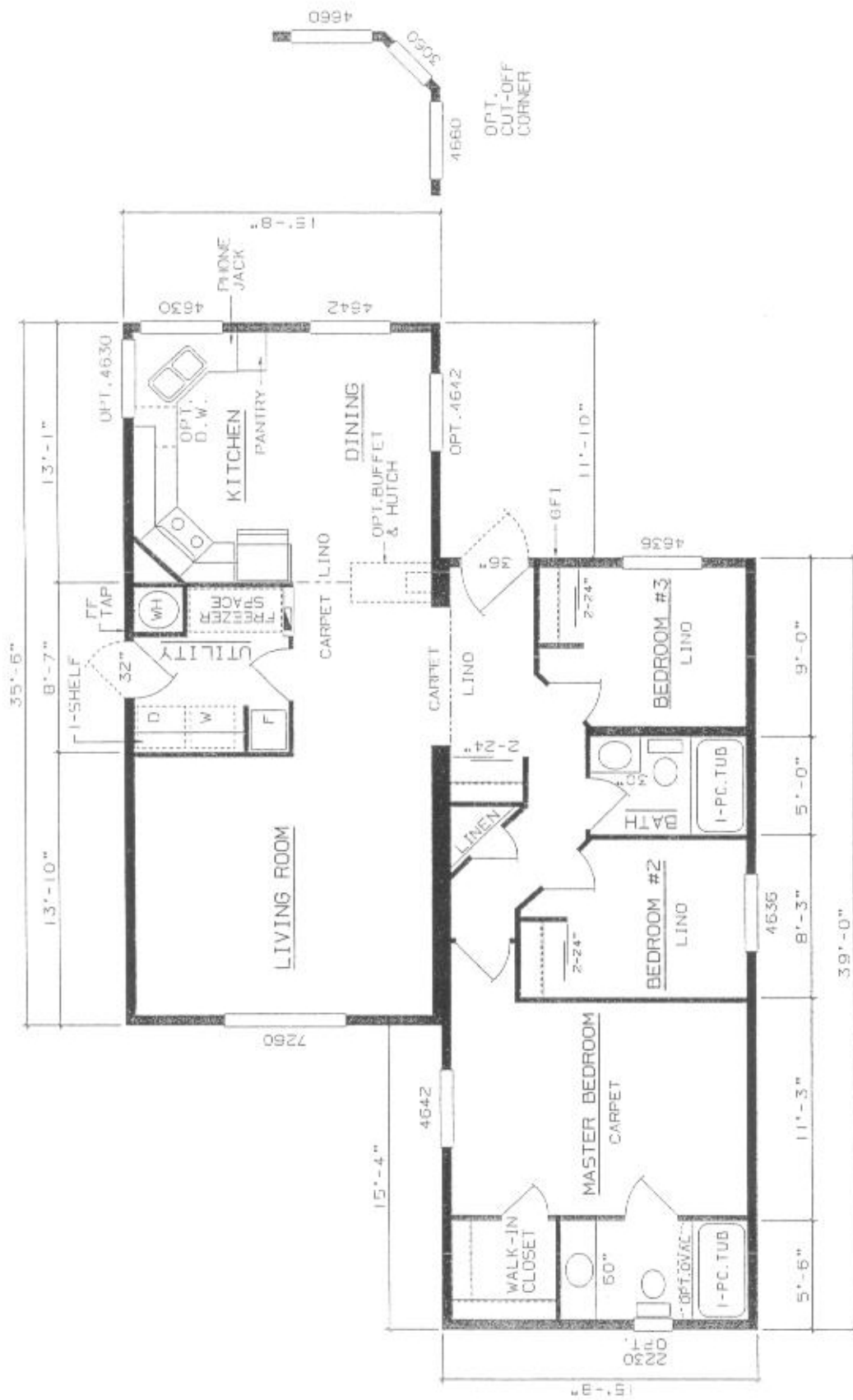






RIVERDALE MODEL: 8016-104





SHREVEPORT MODEL: 8016-105

