

14'/16' MEDALLION



STANDARD SPECIFICATIONS

14' BIRCHWOOD & DUTCHVILIA MEDALLION

All homes represented here are built to CSA. A-277 code

EXTERIOR

Roofline: 4:12 pitch (3 fl optional)
Birchwood exterior-vinyl siding with louvered shutters & boxed front eave with gable roofline
Dutchvilla exterior-vinyl siding with raised panel shutters & Dutch hip front roofline
(shutters front & curbside on standard windows)
Exterior wall sheathing (glued & fastened)
Color co-ordinated asphalt shingled roof
30 lb. Felt eave protection
Perimeter eave venting system
Tubular steel frame with hitch
2 x 6 exterior walls with 3 interior belt rails
2 x 8 floor joists
Continuous double header system
GFI electrical receptacle
Frost free tap
Separate receptacle for heat tape in HWT cavity
Illuminated door chimes front & rear doors
Porch light at all exterior doors

INTERIOR

13/16' floor decking (glued & screwed)
Insulation~ Ceiling R-33
Floor R-28
Walls R~0
'1/2" stippled c.d. gyproc ceilings
Pre-finished decorative wall panel
Cathedral ceiling - living room, dining room, & kitchen
CMHC approved vinyl flooring (full glue & rolled)
CMHC approved carpet living room & master bedroom
Copper wiring throughout
Electric smoke alarms
Natural gas furnace with electronic ignition
40 gallon Natural Gas HWT
100 amp electric service panel
Electrical conduit through floor
Water heater pan

UTILITY ROOM

Plumbed for washer, wired for dryer
Dryer vent installed

WINDOWS

PVC windows & sills complete with screen

WINDOW COVERINGS

Valance & side panels complete with sheer and miniblinds in living room. Valance & miniblinds throughout remainder of home

DOORS

36" insulated front door with peephole & dead bolt
32" insulated rear door with peephole & dead bolt (where applicable)
Pre-finished oak interior doors

KITCHEN

30" range with clock
18 cubic ft. frost free fridge
Power range hood
Double stainless steel kitchen sink
Laminated counter tops with executive edge
Single row decorator tile back splash
Roller drawer hardware
Module cabinets with backs and adjustable shelves
Crown molding
PVC cabinet doors throughout with color choices of Forest Oak, White or Maple

BATHROOMS

GFI circuit
Dehumidistat on main bath fan
1 piece walled tub shower main & ensuite
White tubs, toilets & vanity sinks
Chrome towel bar & paper holder
White vinyl shower curtain
Hollywood light & mirror above vanity(s)
Shut off valves at all toilet locations
Pressure balanced taps at all tubs & showers

MISCELLANEOUS

Living room wired for ceiling fan with separate light switch
Bedroom ceiling lights
Light above kitchen sink
Light bulb package throughout
Washerless faucets
Wire closet shelving throughout

Triple M Housing Ltd. has an unsurpassed commitment to product improvement and quality. In order to meet and exceed market demands, Triple M reserves the right to modify plans, specifications and features at any time and without prior notice. Due to design, provincial or state requirements, some variance in standard features may occur. Please see you Triple M Retailer for more information. NOTE. All square footage sizes are approximate. October 1 2001

STANDARD SPECIFICATIONS

16' BIRCHWOOD & DUTCHVILIA MEDALLION

All homes represented here are built to CSA. A-277 code

EXTERIOR

Roofline: 5/12 pitch
Birchwood exterior vinyl siding with louvered shutters & boxed front eave with gable roofline
Dutchvilla exterior-vinyl siding with raised panel shutters & Dutch hip front roofline (shutters front & curbside on standard windows)
Exterior ~ all sheathing (glued & fastened)
Color co-ordinated asphalt shingled roof
30 lb. Felt Eave Protection is required option outside Alberta & Saskatchewan
Perimeter eave venting system
Tubular steel frame with hitch
2 x 6 exterior walls with 3 interior belt rails
2 x 10 floor joists
Continuous double header system
OFT electrical receptacle
Frost free tap
Separate receptacle for heat tape in HWT cavity
Illuminated door chimes front & rear doors
Porch light at all exterior doors

INTERIOR

13 16" floor decking (glued & screwed)
Insulation: Ceiling R-33
Floor R-28
Walls R-20
¼ stippled c.d. gyproc ceilings
Pre-finished decorative wall panel
Cathedral ceiling - living room, dining room, & kitchen
CMHC approved vinyl flooring (full glue & rolled)
CMHC approved carpet living room & master bedroom
Copper wiring throughout
Electric smoke alarms
Natural gas furnace with electronic ignition
40 gallon Natural Gas HWT
100 amp electric service panel
Electrical conduit through floor

UTILITY ROOM

Plumbed for washer, wired for dryer
Dryer vent installed

WINDOWS

PVC windows & sills complete with screen

WINDOW COVERINGS

Valance & side panels complete with sheer and miniblinds in living room. Valance & miniblinds throughout remainder of home

DOORS

36" insulated front door with peephole & dead bolt
32" insulated rear door with peephole & dead bolt (where applicable)
Pre-finished oak interior doors

KITCHEN

30" range with clock
18 cubic ft. frost free fridge
Power range hood
Double stainless steel kitchen sink
Laminated counter tops with executive edge
Single row decorator tile backsplash
Roller drawer hardware
Module cabinets with hacks and adjustable shelves
Crown molding
PVC cabinet doors throughout with color choices of Forest Oak, White or Maple

BATHROOMS

GFI circuit
Dehumidistat on main bath fan
1 piece walled tub/shower main & ensuite
White tubs, toilets & vanity sinks
Chrome towel bar & paper holder
White vinyl shower curtain
Hollywood light & mirror above vanity(s)
Shut off valves at all toilet locations
Pressure balanced taps at all tubs & showers

MISCELLANEOUS

Living room wired for ceiling fan with separate light switch
Bedroom ceiling lights
Light above kitchen sink
Light bulb package throughout
Washerless faucets
Wire closet shelves throughout

Triple M Housing Ltd. has an unsurpassed commitment to product improvement and quality. In order to meet and exceed market demands, Triple M reserves the right to modify plans, specifications and features at any time and without prior notice. Due to design, provincial or state requirements, some variance in standard features may occur. Please see your Triple M Retailer for more information. NOTE All square footage sizes are approximate. October 1 2001

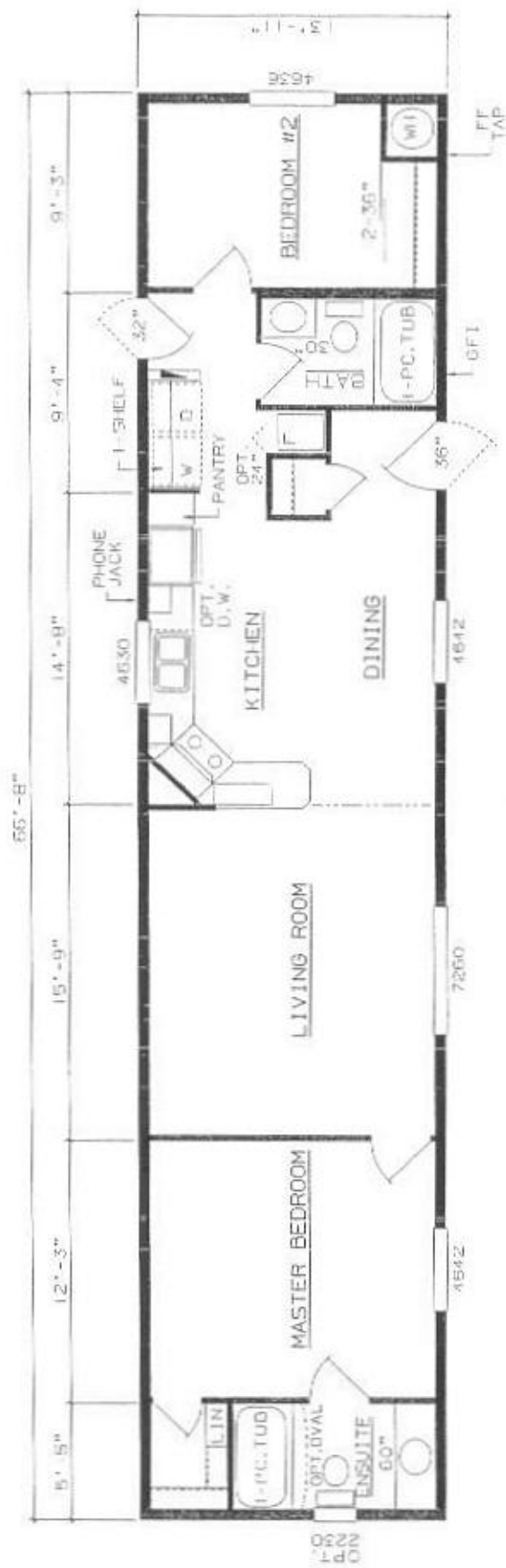
MEDALLION SERIES

14' WIDES

MODEL #	SQ. FT.	# BEDRMS	# BATHS
470-103	938	2	2
470-105	938	2	1
470-106	938	2	1
470-112	938	3	1
470-116	938	3	2
470-120	938	2	2
470-121	938	2	2
470-122	938	2	2
470-123	938	3	1
470-400	938	2	2
470-401	938	2	1
470-402	938	3	1

16' WIDES

MODEL #	SQ. FT.	# BEDRMS	# BATHS
666-100	992	2	2
672-607	1088	3	2
680-100	1216	3	2
680-101	1216	3	2
680-102	1216	3	2
680-103	1216	3	2
680-104	1216	3	2
680-105	1216	3	2
680-106	1216	3	2
680-107	1216	3	2
680-108	1216	3	2
680-109	1216	3	2
680-110	1216	3	2
680-111	1216	3	2
680-112	1216	3	2
680-113	1216	3	2
680-604	1216	3	2
680-605	1216	3	2
680-606	1216	3	2




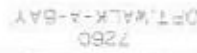
MODEL: 470-103



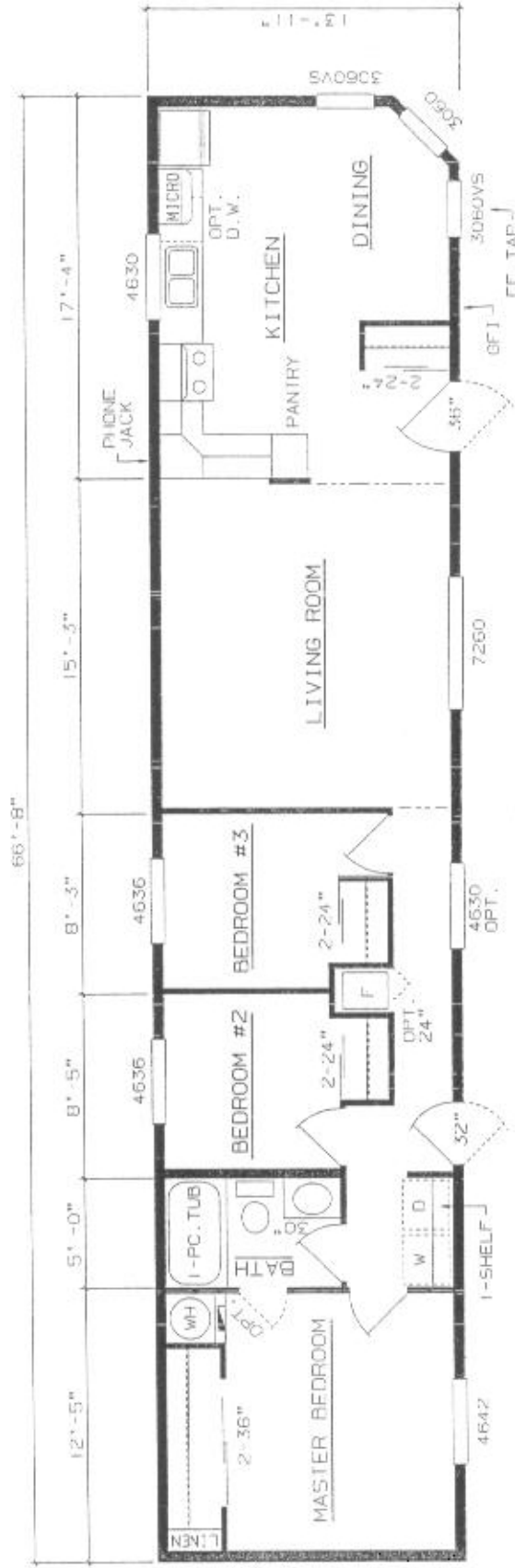


Virginia 200
Memphis 1901

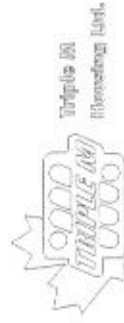
MODEL: 470-105



Triple M
104.1 FM
Melbourne



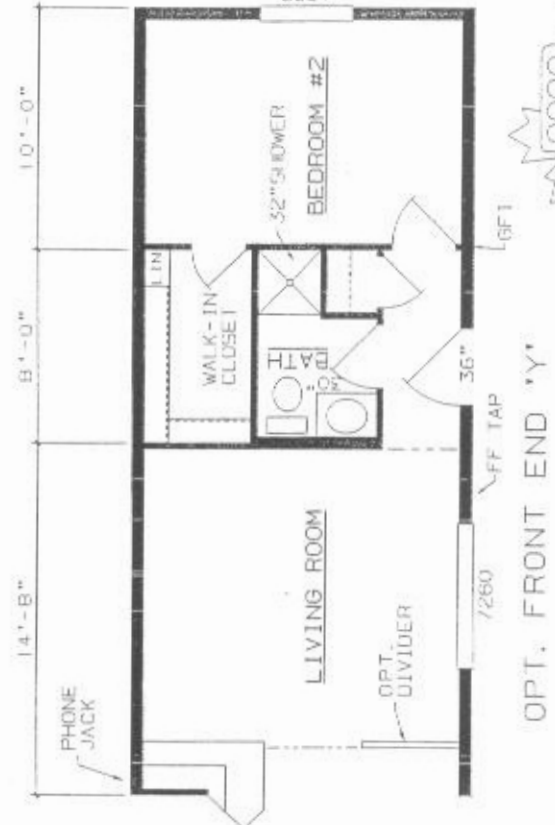
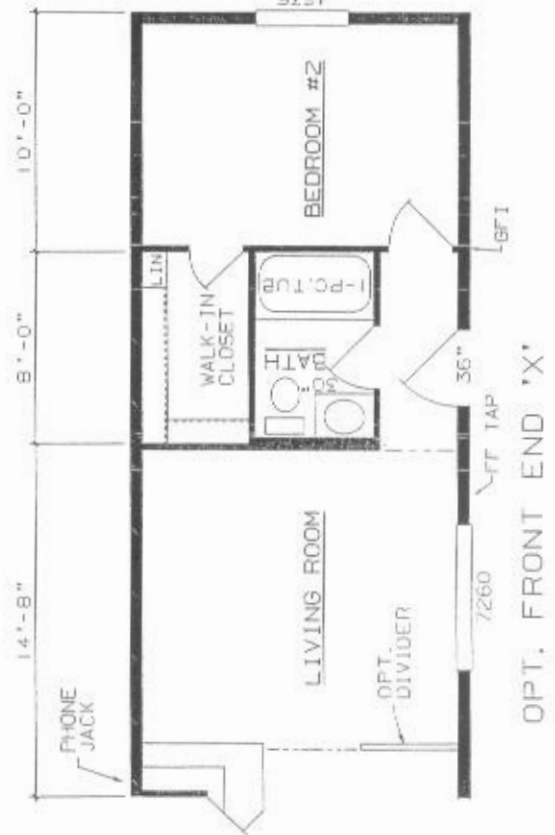
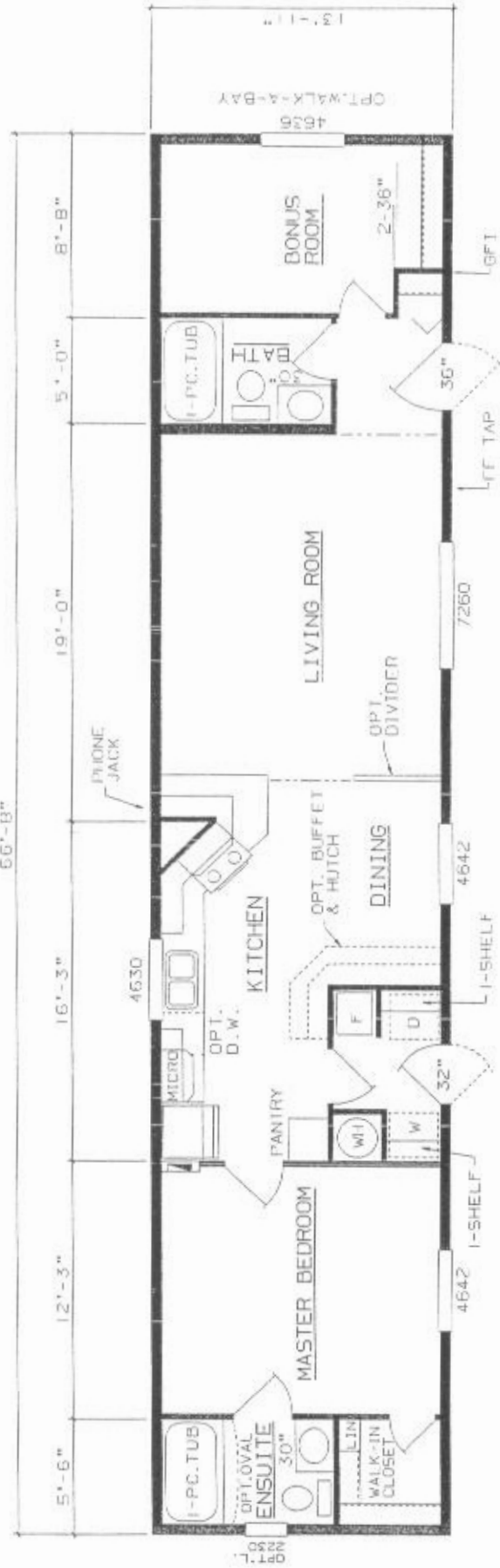
MODEL: 470-112





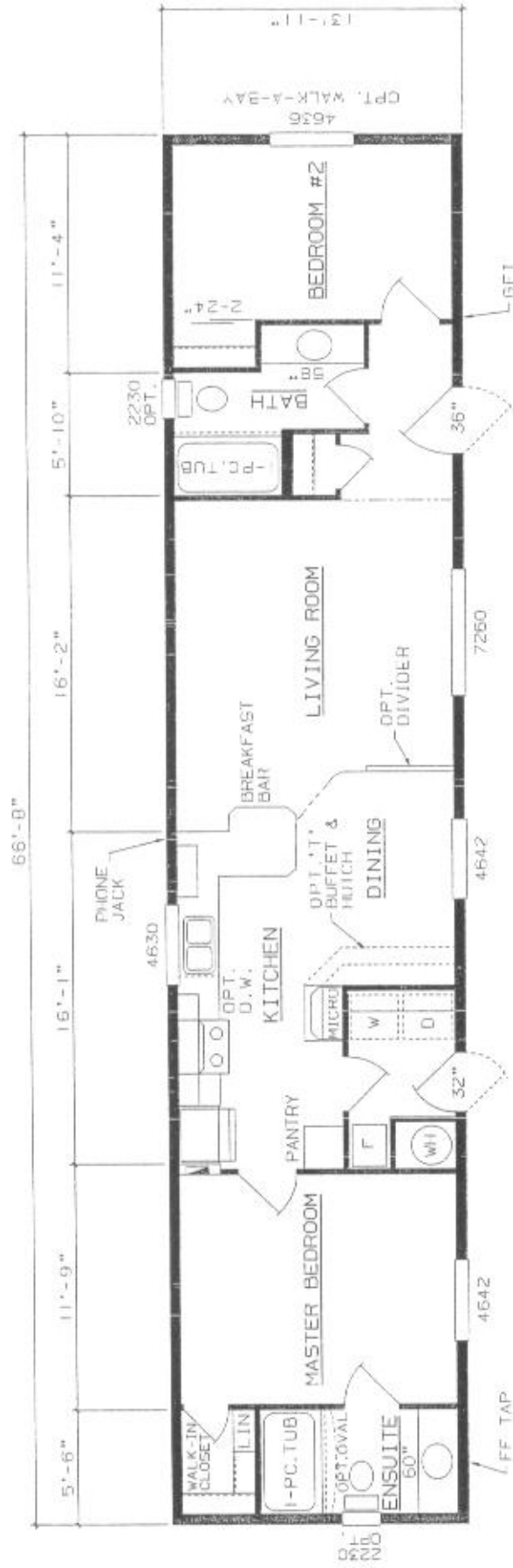
MODEL: 470-116

56'-8"

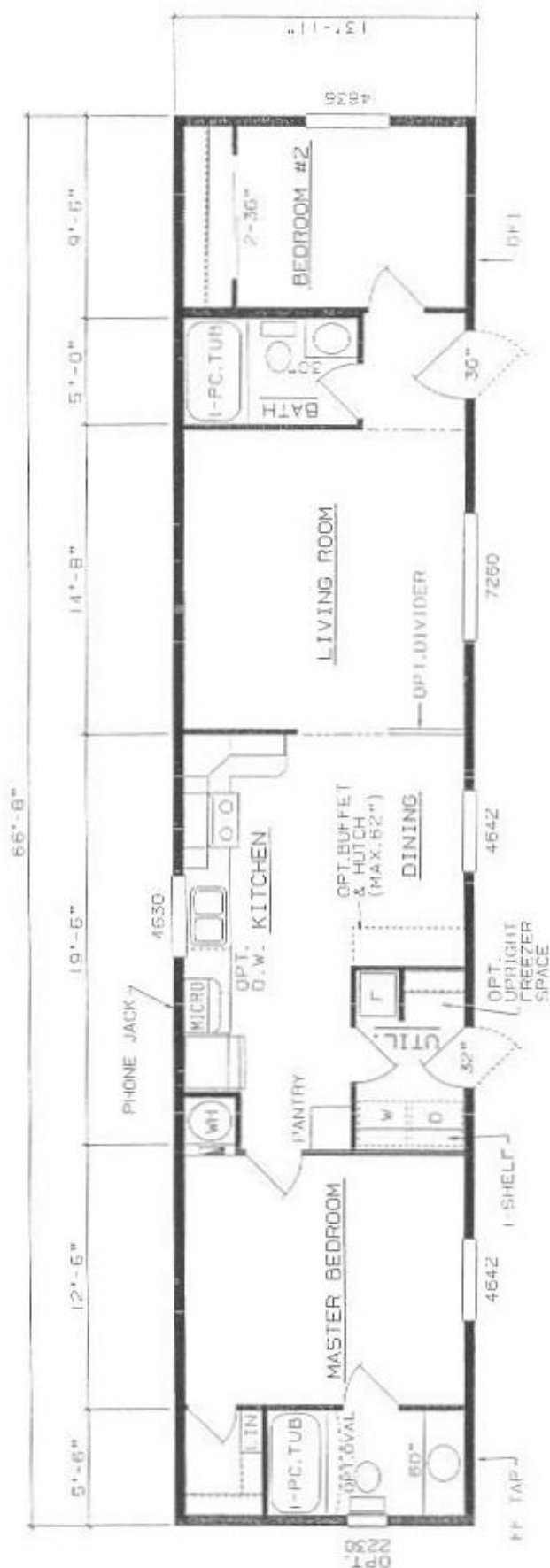


Model 68
Flooring Ltd.

MODEL: 470-120



MODEL: 470-121

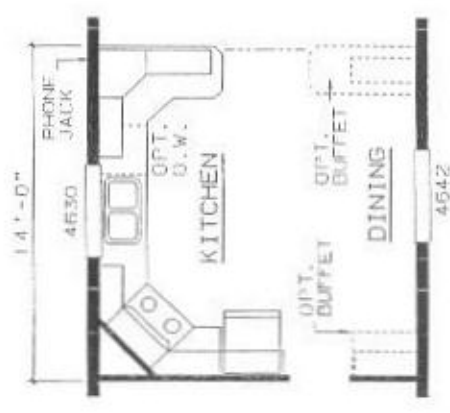
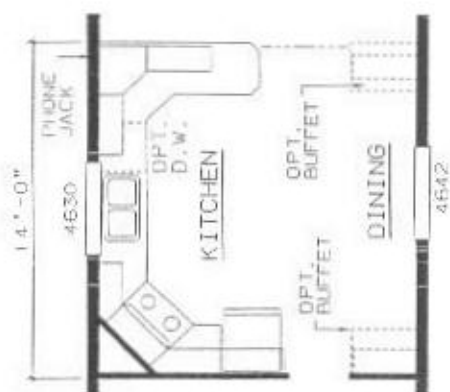
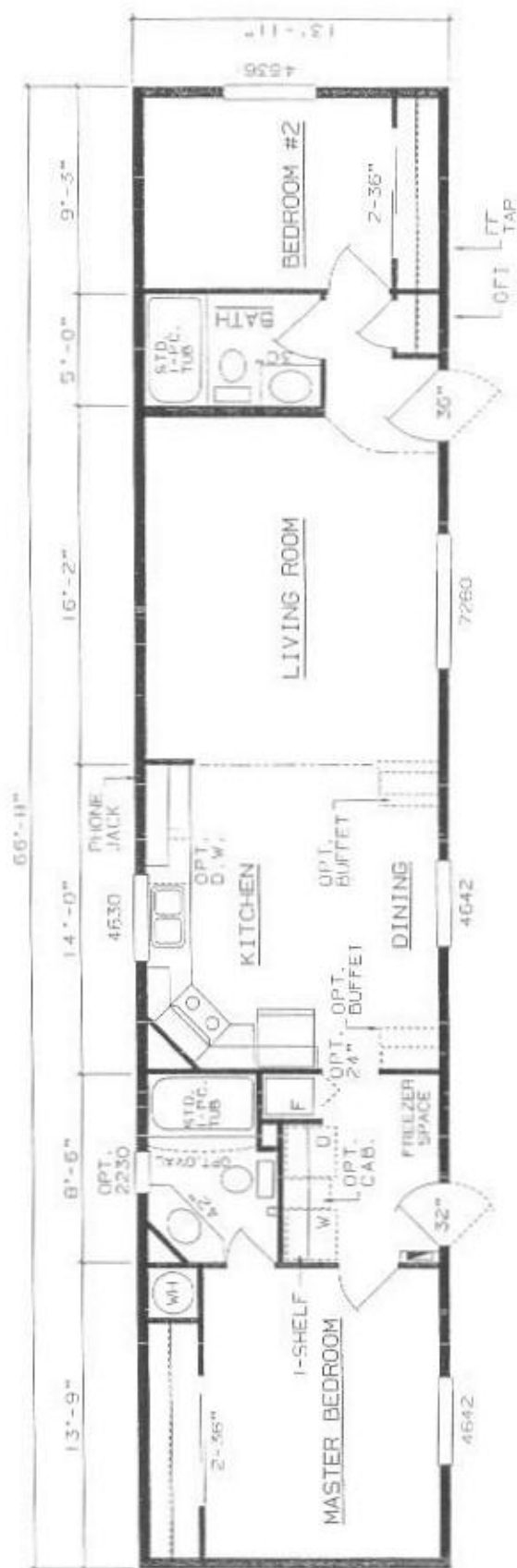


MODEL: 470-122





Verfahren des
Verfahrens des

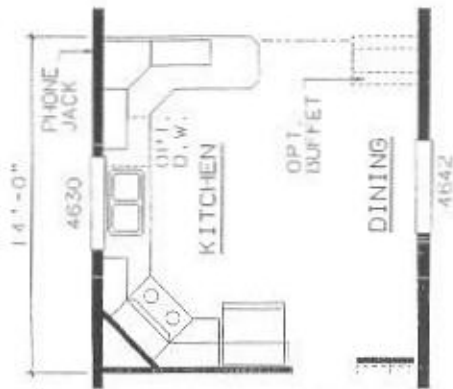


OPT. KLITCHEN/DINING 'B'

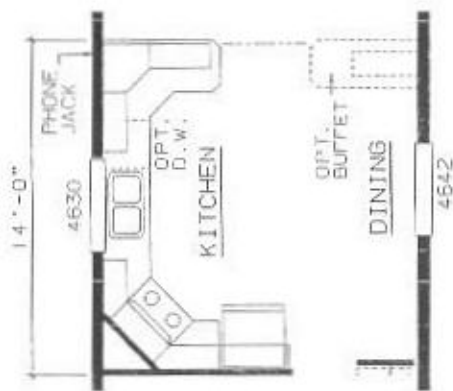
OPT. KITCHEN/DINING "A"



MODEL: 470-400



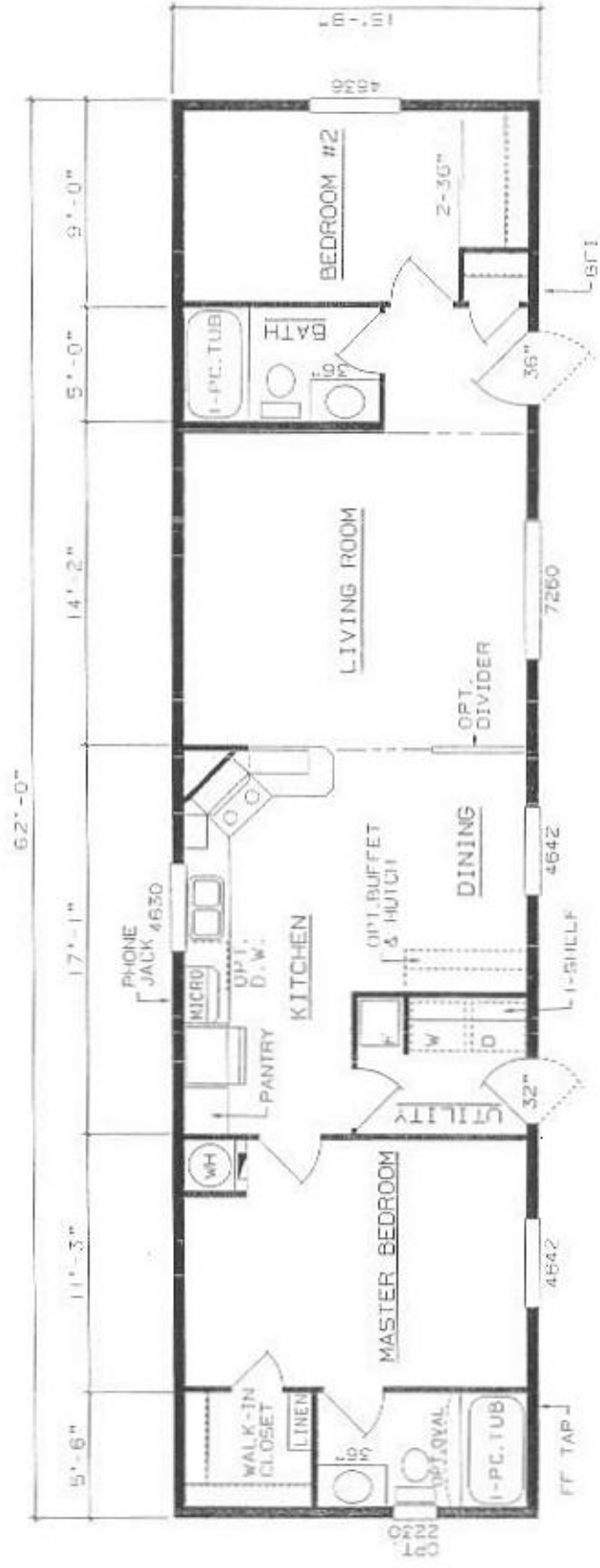
OPT. KITCHEN/DINING 'B'



OPT. KITCHEN/DINING 'A'



MODEL: 470-402

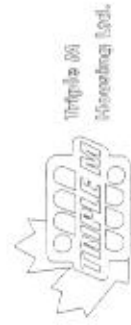


MODEL: 666-100

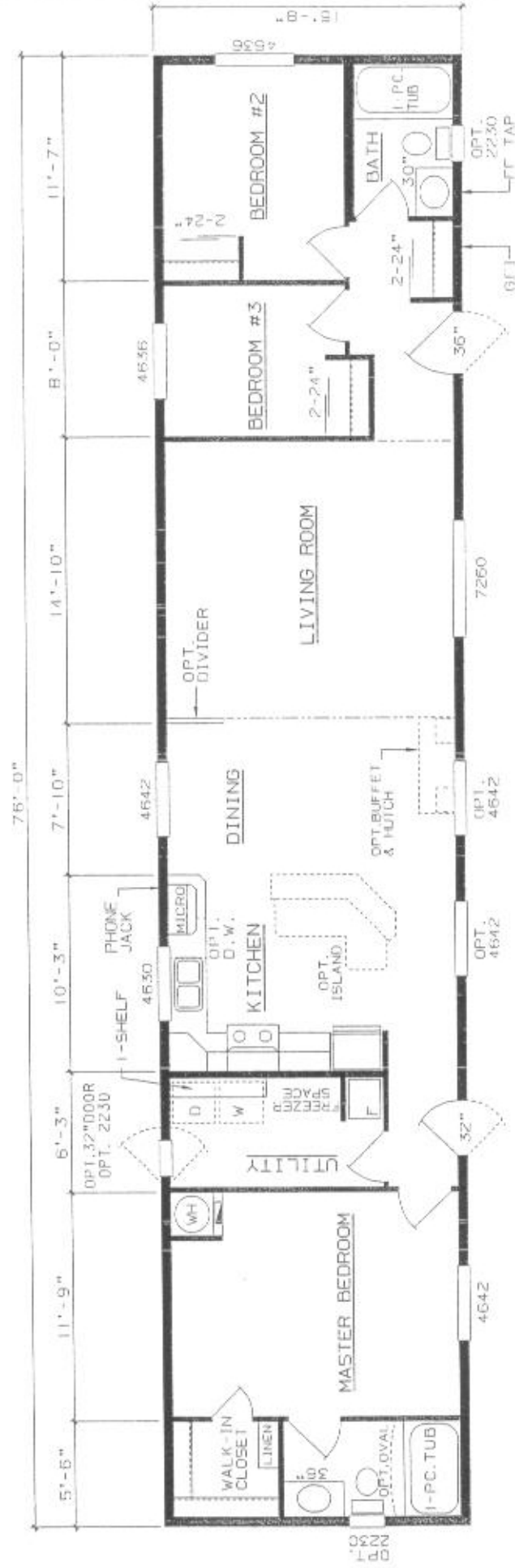


MODEL: 672-607

Dr. Joseph

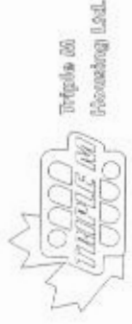


MODEL: 680-100



MODEL: 680-101

Multiple Use
Residential Unit



MODEL: 680-102



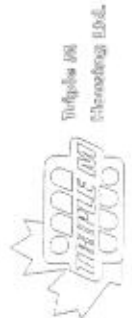
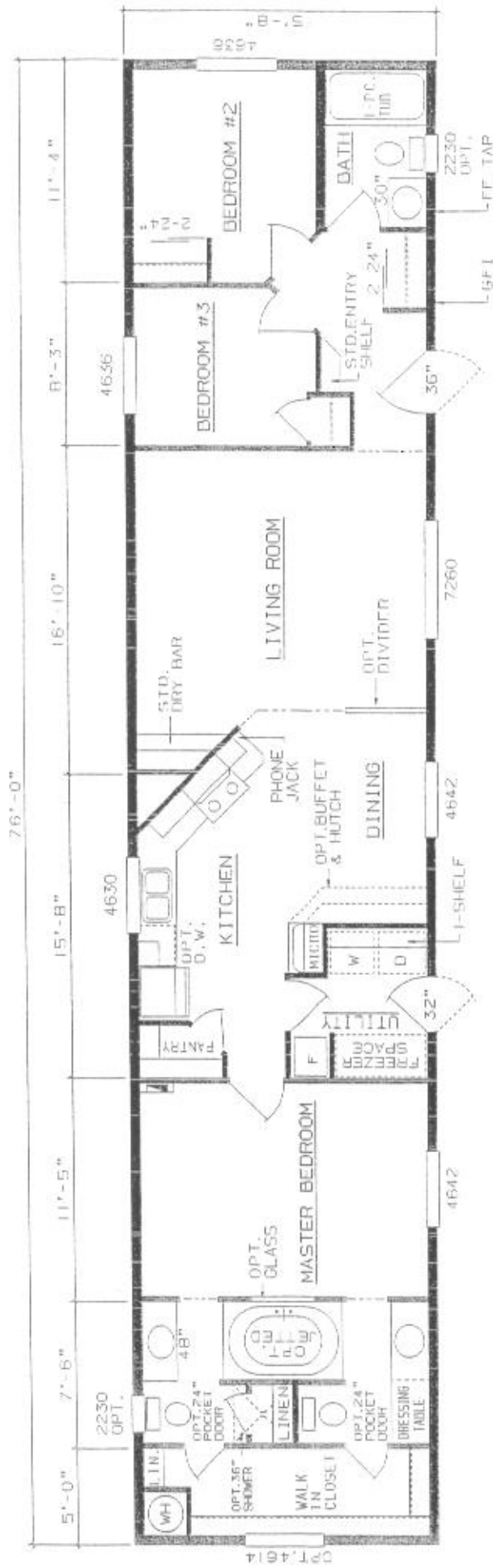
MODEL: 680-103



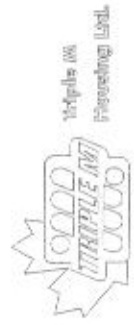
MODEL: 680-105



MODEL: 680-106



MODEL: 680-107

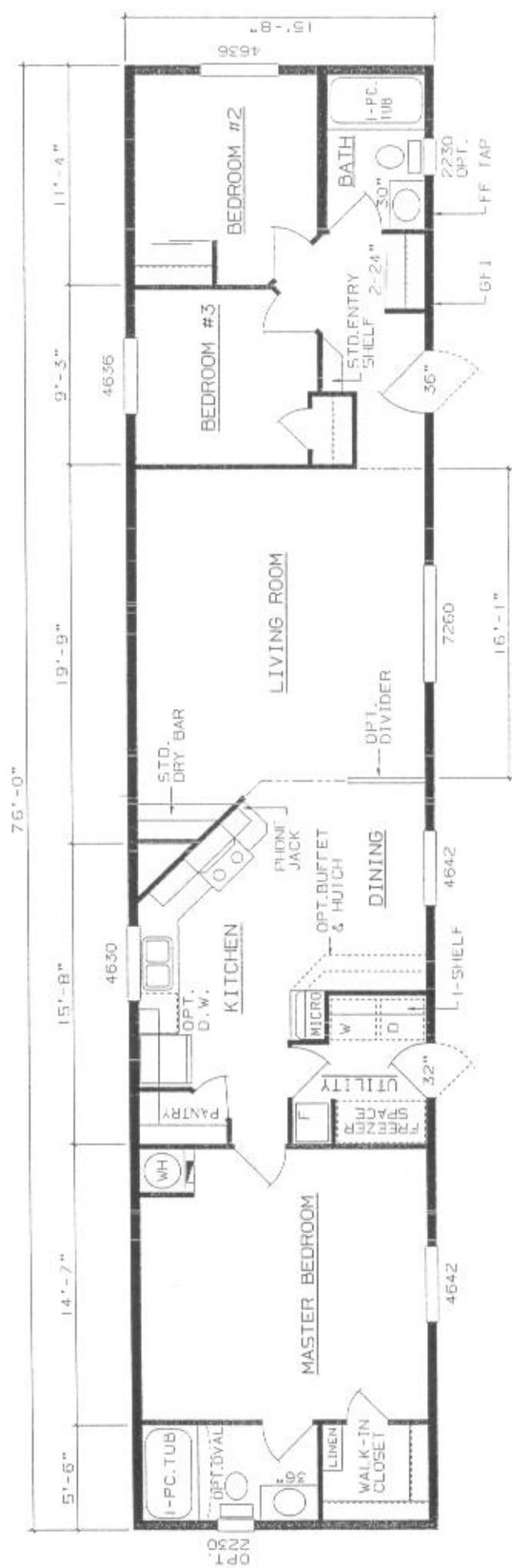


MODEL: 680-108



MODEL: 680-109



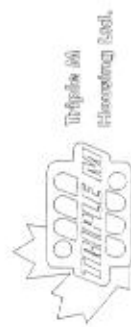


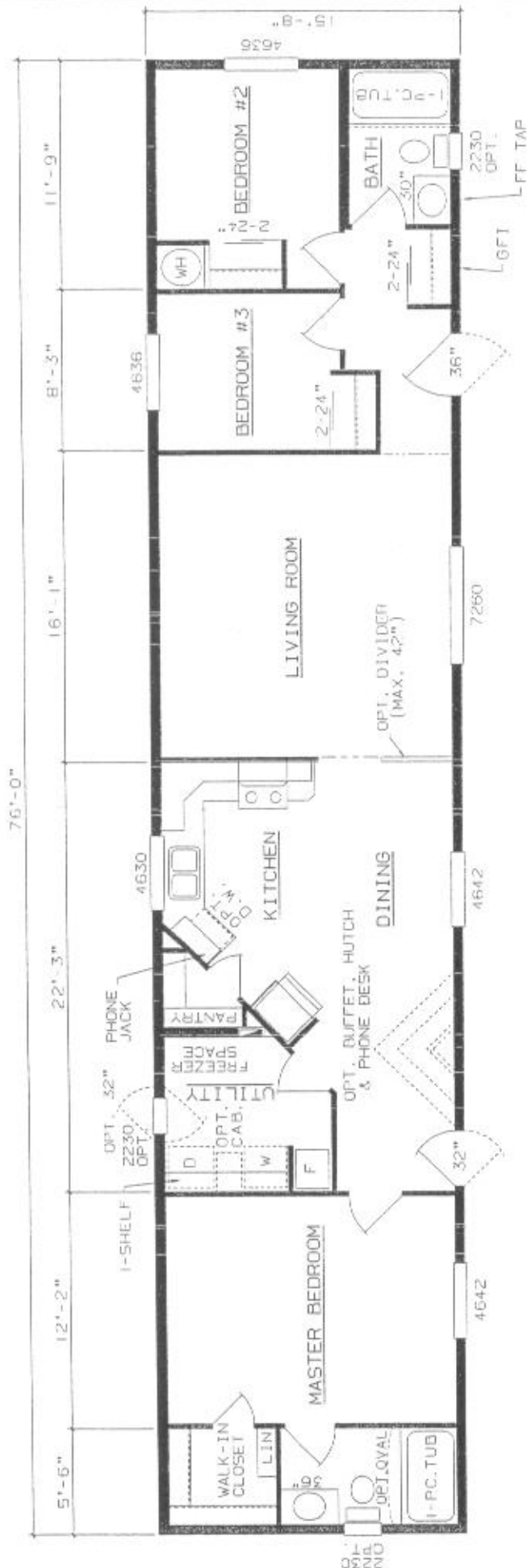
MODEL: 680-110





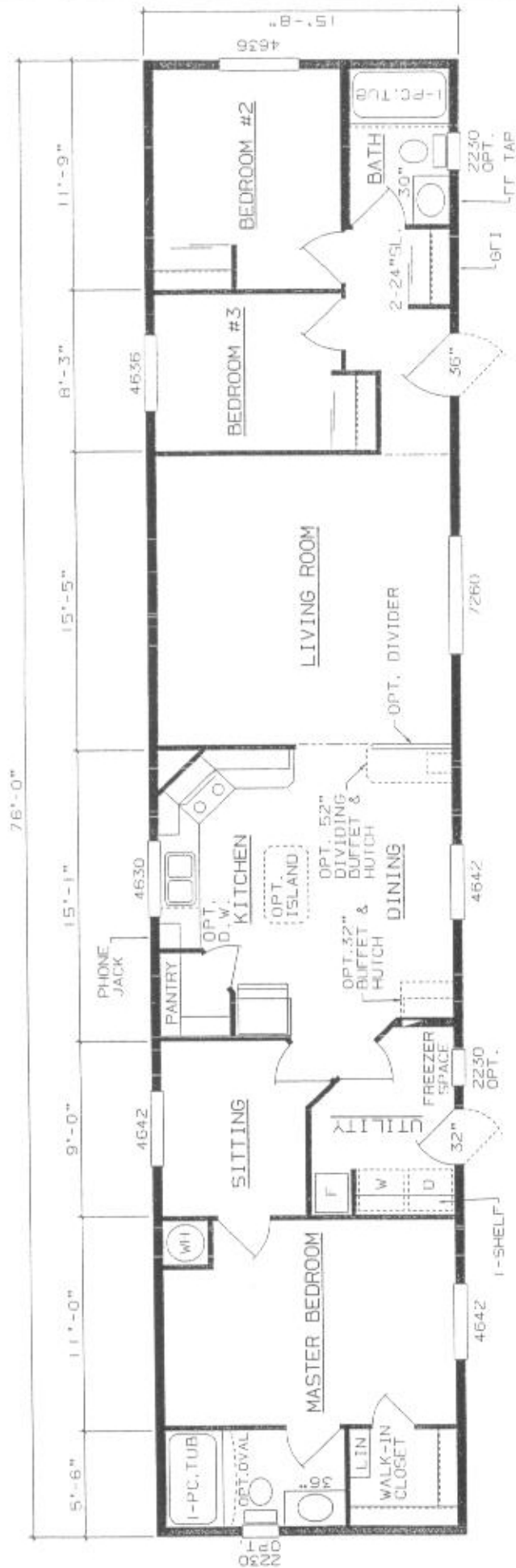
MODEL: 680-III





MODEL: 680-112

Triple A
Housing Ltd.

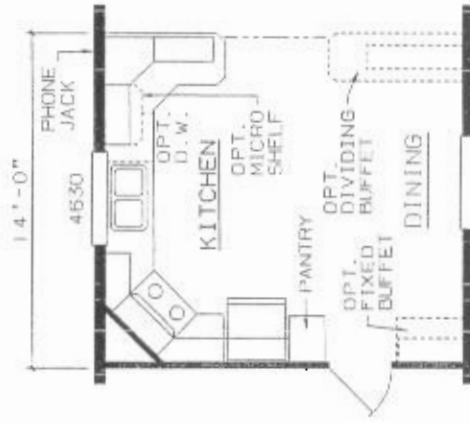


MODEL: 680-113

76'-0"



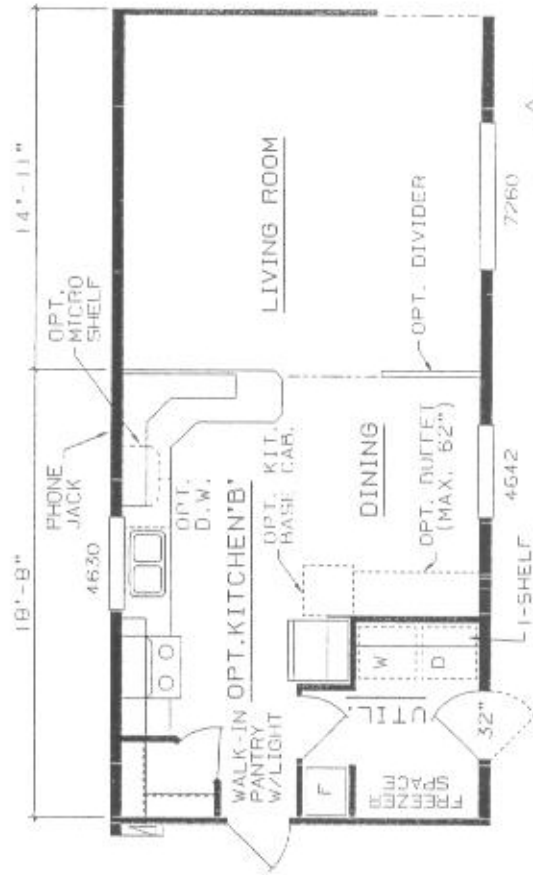
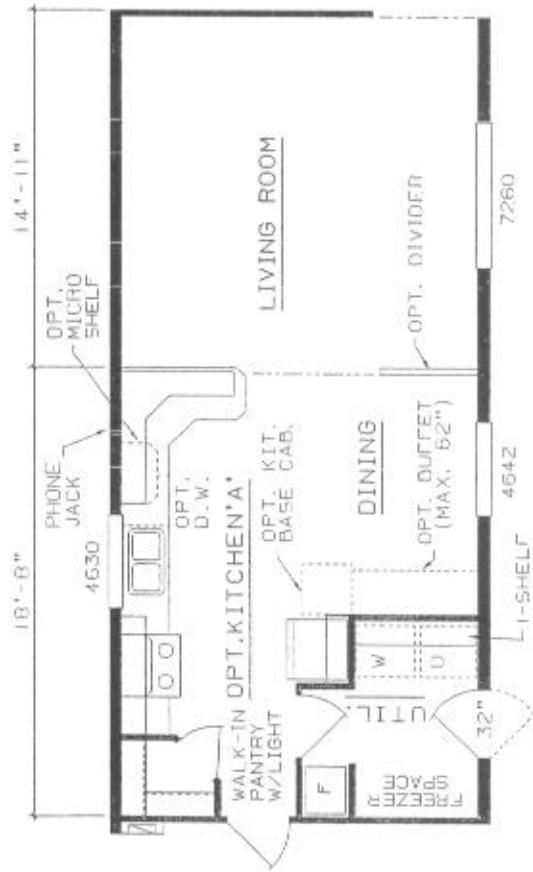
OPT. KITCHEN/DINING 'B'



OPT. KITCHEN/DINING 'A'



MODEL: 680-604



OPT. KITCHEN "A"

OPT. KITCHEN 'B'

MODEL: 680-605



Thriples bei
Einsamling und,

