

PARK MODELS



STANDARD SPECIFICATIONS

SERENITY PARK MODEL HOMES

All homes represented here are built to CAN/CSA Z-241 requirements

EXTERIOR

Running gear and coupler hitch
Roofline: 5'P pitch
Residential vinyl lap siding
Exterior wall sheathing (glued & fastened)
Color coordinated asphalt-shingled roof
Perimeter eave veining system
Color coordinated wood fascia & white vinyl soffit
2 x 4 walls
2 x 6 floor joists
GFI electrical receptacle at swinging exterior door
Frost free tap
Separate receptacle for heat tape in HWT cavity
Illuminated door chimes at front & rear doors
Carriage light switched at exterior doors

INTERIOR

13/16" floor decking (glued & screwed)
Insulation: Ceiling: R-20
Floors: R-20
Walls: R-1S
Pre-finished vinyl wall panel with battens at Kitchen/
Bath (taped seams remainder of home) Sand Vipsun N/A
1/2 "stippled cd. Gyproc ceilings
Cathedral ceiling throughout
Carpet in Living Room and Master Bedroom
Vinyl flooring balance of home
Copper wiring throughout
Electric smoke alarm
Convertible natural gas furnace with electronic ignition
40 Gallon electric HWT with dram pan

WINDOWS

PVC windows & sills complete with screen

WINDOW COVERINGS

Valance & side panels complete with sheer and
mini blinds in living room. Valance & mini blinds
throughout remainder of home
Vertical blinds at patio door

DOORS

White Colonist interior doors
32' insulated exterior door
Patio door

KITCHEN

White kitchen appliances
24" gas range
18 cubic ft. frost free fridge
Power range hood
Double stainless steel kitchen sink
Laminate counter tops with executive edge
Built in soap tray
Single row decorator tile back splash
Roller drawer hardware
Module cabinets with backs and adjustable shelves
Crown molding
PVC cabinets throughout with color choice of Forest Oak,
White or Maple

BATHROOMS

GFI circuit
White tub, toilet & vanity sink
Laminate counter tops with self-edge
1 piece walled tub/shower
Dehumidistat on Bath fan
Chrome towel bar & paper holder
White vinyl shower curtain
Hollywood light & framed mirror above vanity
Shut off valves at toilet

MASTER BEDROOM

Built-in cabinetry
Laminate counter tops with self-edge
Reading lights at night stands (switched separately)
Bath light controlled by S-way switch in Master Bedroom

MISCELLANEOUS

Forest Oak trim throughout
Medallion lighting package
TV/Phone conduit in Living Room & Master Bedroom
Chair rail in Living Room
Living Room wired for ceiling fan with separate switch
Plumbed and wired for combination 'RV style'
washer/dryer
50 amp electrical service panel w/25'0" power cord
Fire extinguisher
Washerless Faucets
Wire closet shelves throughout
Light bulb package

Triple M Housing Ltd. has an unsurpassed commitment to product improvement and quality. In order to meet and exceed market demands, Triple M reserves the right to modify plans, specifications and features at any time and without prior notice. Due to design, provincial or state requirements, some variance in standard features may occur. Please see your Triple M Retailer for more information.
NOTES All square footage sizes are approximate.

October 1, 2001

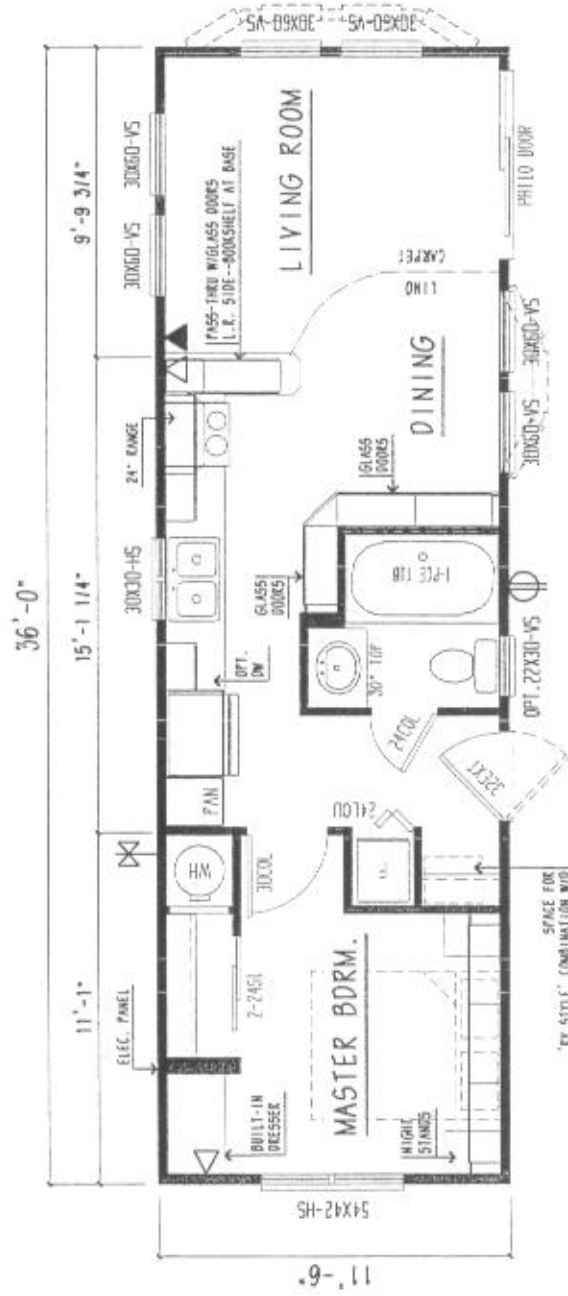
SERENITY SERIES

PARK MODELS

MODEL #	SQ. FT.	# BEDRMS	# BATHS
PM-1232-03	384	1	1
PM-1236-01	432	1	1
PM-1236-04	432	1	1
PM-1240-01	480	1	1
PM-1240-02	480	1	1
PM-1240-04	480	1	1
PM-1240-05	480	2	1
PM-1244-01	528	1	1
PM-1244-02	528	1	1
PM-1244-06	528	2	1

PM-1236-01

NOT ALL ITEMS SHOWN ARE STANDARD
 (PLUMBING ARE SHOWN WITH OPT. W/ELK-H-BRITS)



LEGEND	
◁	TELEPHONE JACK
◀	EXTERIOR G/T
✕	OPT. STAINLESS WIRE
✕	IT IRP

NOT ALL ITEMS SHOWN ARE STANDARD
(PLANS ARE SHOWN WITH OPT. WALK-AR-BAYS)



LEGEND	
	TELEPHONE JACK
	EXTERIOR GFI
	INT. GFI

NOT ALL ITEMS SHOWN ARE STANDARD
(PLUG ARE SHOWN WITH OPT. WALK-A-DAYS)



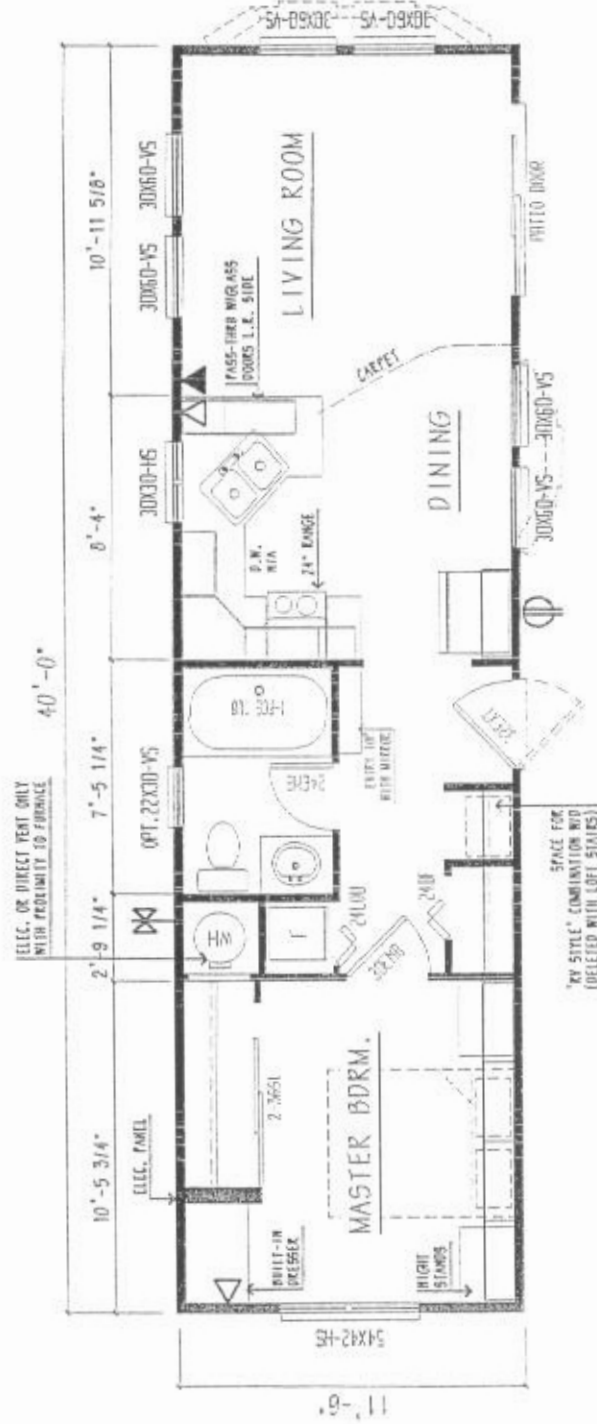
LEGEND	
◁	- TELEPHONE JACK
⊖	- EXTERIOR GFI
⊗	- GFI SENSITIVE WIRE
⊗	- IT TRIP

NOT ALL ITEMS SHOWN ARE STANDARD
(PLANS ARE SHOWN WITH OPT. WALK-AR-BAYS)

[illegible]

PM-1240-04

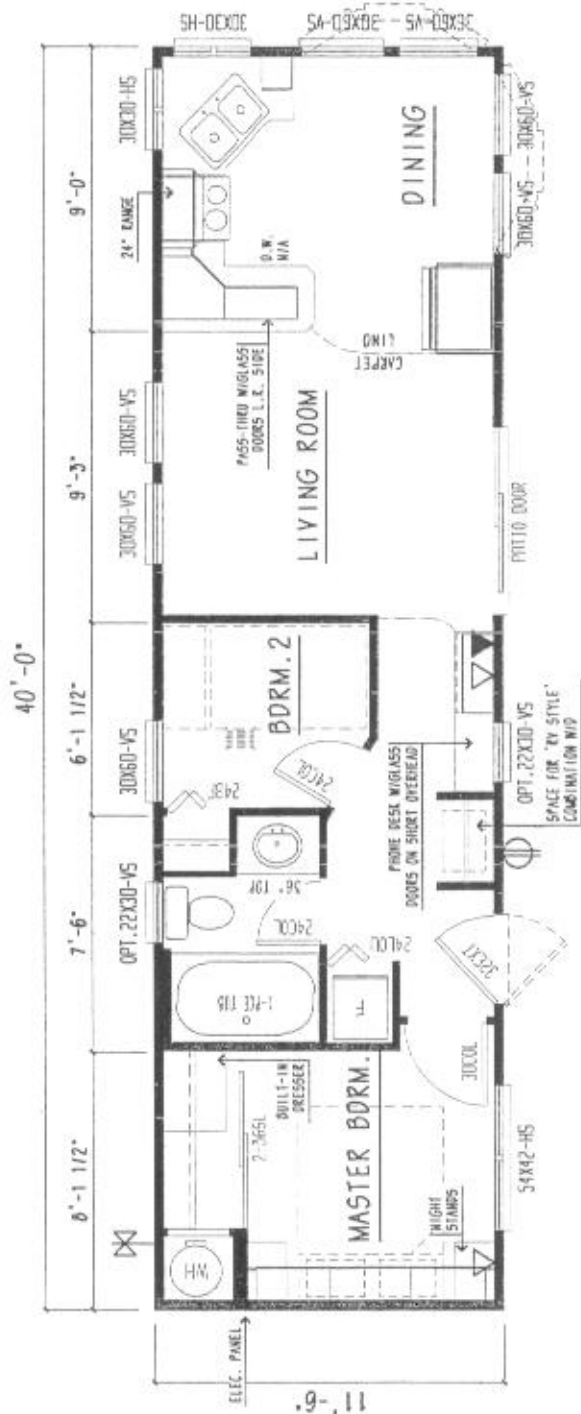
NOT ALL ITEMS SHOWN ARE SIGNATURE QUALITIES AND SOME QUALITY (SIGNED-B-A-ARTS) (PLUMS ARE SHOWN WITH OPT. WALK-A-ARTS)



LEGEND	
	TELEPHONE JACK - EXTENSION GFI
	EXT. SPEAKER WIRE - EXT. TYP

PM-1240-05

NOT ALL ITEMS SHOWN ARE STANDARD
(PLANS NOT SHOWN WITH OPT. WALK-IN-BATHS)



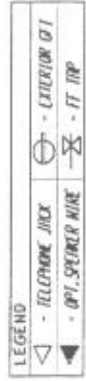
LEGEND			
	TELEPHONE JACK		EXTERIOR GFI
	OPT. STAIRCASE NITE		11' H.P.

NOT ALL ITEMS SHOWN ARE STANDARD
 (PLANS ARE SHOWN WITH OPT. WALK-7-BAYS)



LEGEND	
▽	ILLUMINANCE JACK
⊗	OPT. SPINNER WIRE
⊕	INTERIOR GFI
⊗	FF INT

NOT ALL ITEMS SHOWN ARE STANDARD
(PLANS ARE SHOWN WITH OPT. WALK-IN-BAYS)



NOT ALL ITEMS SHOWN ARE STANDARD
(PLANS ARE SHOWN WITH OPT. WALK-AR-AWAYS)

