

PEMBROKE



STANDARD SPECIFICATIONS PEMBROKE

All homes represented here are built to CSA. A-277 code

EXTERIOR

4/12 fixed roof (Hinged roof may be a required option in some localities)
Full vinyl lap siding
Truss floor system with box beam plates
16" fixed eaves (excludes 28' wide to BC)
30 lb. felt eave protection required option outside Alberta & Saskatchewan
Shipping walls in OSB poly on eave cavities
Mating walls 2 x 4
2 x 6 exterior walls with 2 exterior 2x4 belt rails and 3 interior belt rails
2 x 4 interior walls
GFI electrical receptacle
Frost free tap
Carriage light at front door
Porch light at all other exterior doors
Illuminated door chime

INTERIOR

8 Ft. walls
Insulation: Ceiling: R-40
Walls : R-20
Floors R 26 (Self Contained only)
1/2" splattered c.d. Gyproc ceilings
Finished drywall (primed & one coat of paint)
Cathedral ceilings in living room, dining room, kitchen, family room
23/32" tongue & groove OSB decking (screwed & glued)
6 mm Proboard under lino
CMHC approved carpet -living, family room hallway & all bedrooms
CMHC approved vinyl flooring balance of home
100 amp electrical service panel
GET circuit breaker (master bedroom, bath, ensuite)
Copper wiring throughout
Electric smoke alarms
Light bulb package
Wire closet shelving

UTILITY ROOM (Self contained Pembroke)

Wire shelf over washer/dryer space
Dryer vent installed
Plumbed for washer/wired for dryer

UTILITY ROOM (Self contained) contd.

40 gallon natural gas HWT
Natural gas furnace

UTILITY ROOM (Basement Pembroke)

No HWT and no furnace
Heat ducts and plumbing installed in floor system
(return air system to be designed & installed by others)

WINDOWS

Painted colonial casing (windows & doors)
PVC windows & sills complete with screen

WINDOW COVERINGS

Valance & side panels complete with sheer and miniblinds in living, family and formal dining room.
Valance & miniblinds throughout remainder of home

DOORS

Master bedroom mirror closet doors
Sliding closet doors throughout remainder of home
White Colonist interior doors with residential jamb
36" insulated front door with peephole & Deadbolt

KITCHEN

Power range hood
Double stainless steel kitchen sink
Laminate counter tops with self edge
Single row white tile back splash
Module cabinets with backs and adjustable shelves
PVC cabinets throughout with color choice of
Forest Oak, White or Maple

BATHROOMS

1 piece walled tub/shower in Main & Ensuite
White tubs, toilets & vanity sinks
Dehumidistat on main bath fan
Chrome towel bar and paper holders
Hollywood light above vanity(s)
Washerless Faucets
Shut off valves at all toilet locations

Triple M Housing Ltd. has an unsurpassed commitment to product improvement and quality. In order to meet and exceed market demands, Triple M reserves the right to modify plans, specifications and features at any time and without prior notice. Due to design, provincial or state requirements, some variance in standard features may occur. Please see your Triple M Retailer for more information. NOTE: All square footage sizes are approximate .October 1 200]

PEMBROKE SERIES

SELF CONTAINED

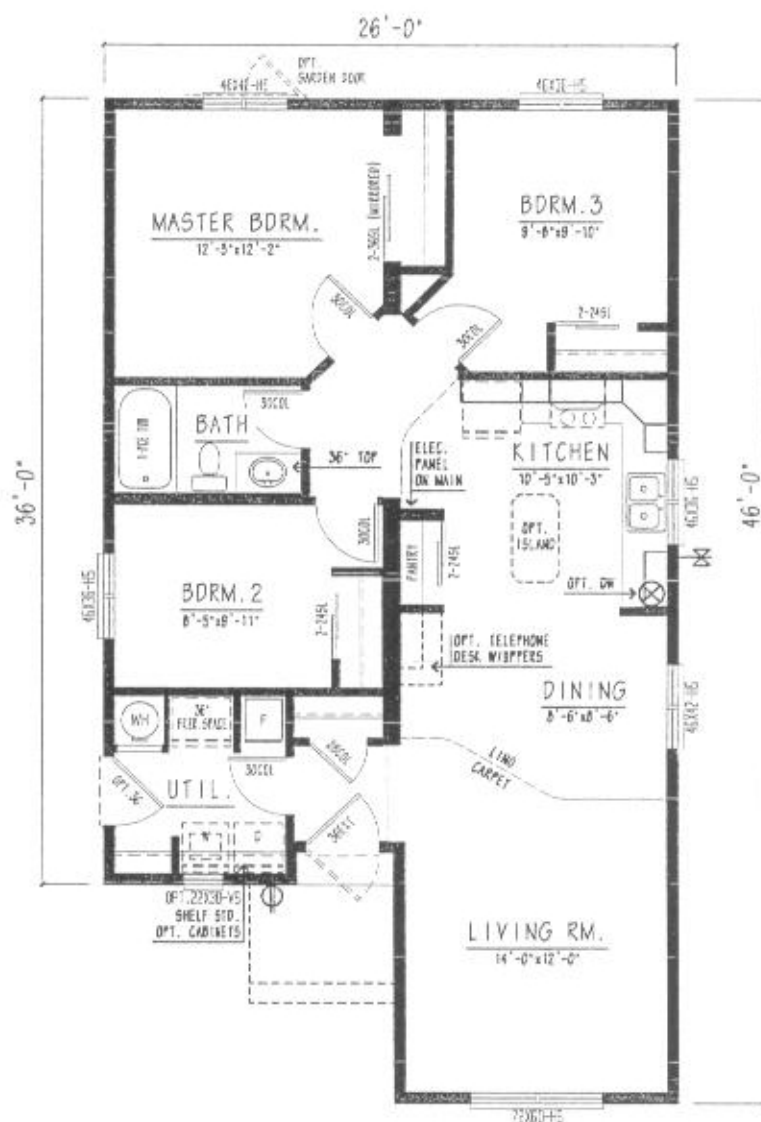
MODEL #	SQ. FT.	# BEDRMS	# BATHS
PEMBROKE 1-4626-1C	1066	3	1
PEMBROKE 2-4826-1C	1118	3	2
PEMBROKE 3-5826-1C	1326	3	2
PEMBROKE 1-4628-1C	1148	3	1
PEMBROKE 2-4828-1C	1204	3	2
PEMBROKE 3-5828-1C	1428	3	2

SPLIT LEVEL SERIES

MODEL #	SQ. FT.	# BEDRMS	# BATHS
PEMBROKE 1-4626-1S	1066	3	1
PEMBROKE 2-4826-1S	1118	3	2
PEMBROKE 3-5826-1S	1326	3	2
PEMBROKE 1-4628-1S	1148	3	1
PEMBROKE 2-4828-1S	1204	3	2
PEMBROKE 3-5828-1S	1428	3	2

BASEMENT SERIES

MODEL #	SQ. FT.	# BEDRMS	# BATHS
PEMBROKE 1-4626-1B	1066	3	1
PEMBROKE 2-4826-1B	1118	3	2
PEMBROKE 3-5826-1B	1326	3	2
PEMBROKE 1-4628-1B	1148	3	1
PEMBROKE 2-4828-1B	1204	3	2
PEMBROKE 3-5828-1B	1428	3	2



SOME ITEMS SHOWN ARE OPTIONAL OR
SUPPLIED AND INSTALLED BY OTHERS

(ALSO AVAILABLE AS A 28-WIDE)
SELF-CONTAINED PEM626-DIC-- 1066 SOFT

FEATURES

- # 3 BEDROOM - 1 BATH
- # GREAT USE OF SPACE
- # NARROW LOT DESIGN
- # PERFECT STARTER HOME



(ALSO AVAILABLE AS A 28-WIDE)
SELF-CONTAINED PEM4826-DIC-- 1118 SOFT

- # 3 BEDROOM - 2 BATH
- # GREAT USE OF SPACE
- # NARROW LOT DESIGN
- # PERFECT STARTER HOME

SAMPLE ELEVATION

SOME ITEMS SHOWN ARE OPTIONAL, OR
SUPPLIED AND INSTALLED BY OTHERS



SAMPLE ELEVATION

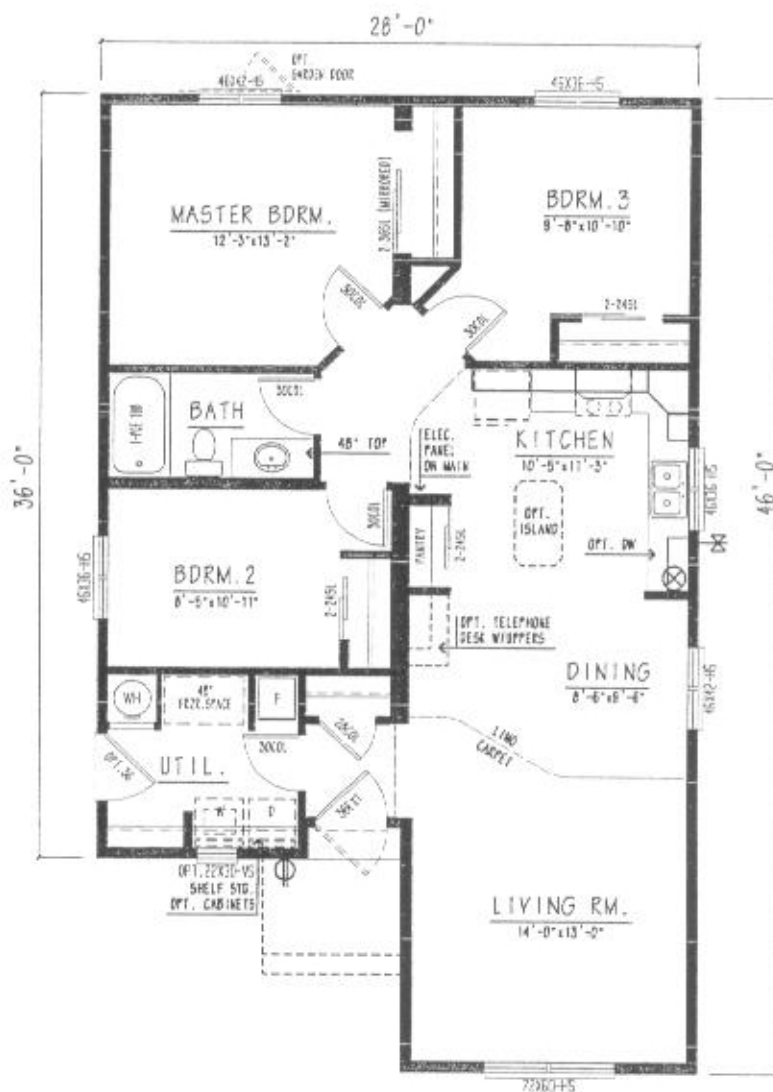
SOME ITEMS SHOWN ARE OPTIONAL OR
SUPPLIED AND INSTALLED BY OTHERS

THE PEMBROKE III

(ALSO AVAILABLE AS A 20'-WIDE)
SELF-CONTAINED PERMITS-DIC-- 1326 SQ. FT.

FEATURES

- * 3 BEDROOM - 2 BATH
- * INTERESTING DESIGN
- * OPEN LIVING SPACE
- * GREAT FOR 'MOVE-UP'



(ALSO AVAILABLE AS A 26-WIDE)
SELF-CONTAINED PEM428-DIC-- 1148 SOFT

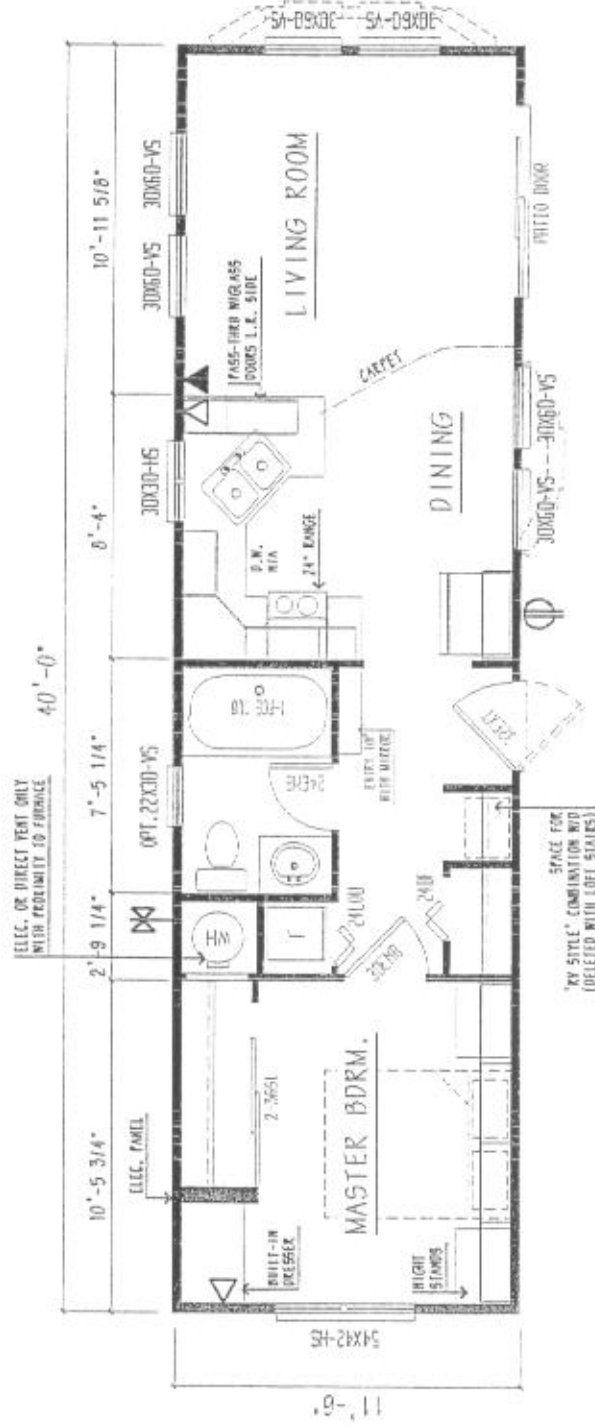
SOME ITEMS SHOWN ARE OPTIONAL OR
SUPPLIED AND INSTALLED BY OTHERS

FEATURES

- # 3 BEDROOM - 1 BATH
- # GREAT USE OF SPACE
- # NARROW LOT DESIGN
- # PERFECT STARTER HOME

PM-1240-04

NOT ALL ITEMS SHOWN ARE STANDARD
(PLANS ARE SHOWN WITH OPT. MILK-B-BITS)





SAMPLE ELEVATION

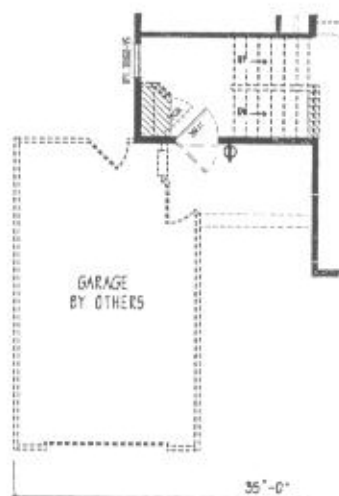
SOME ITEMS SHOWN ARE OPTIONAL OR
SUPPLIED AND INSTALLED BY OTHERS

THE PEMBROKE III (28)

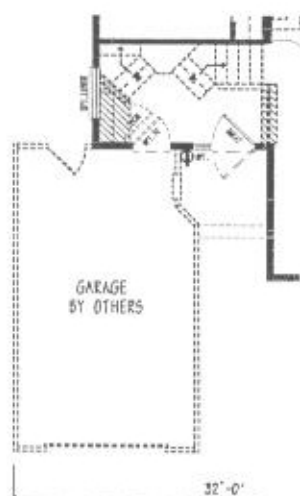
(ALSO AVAILABLE AS A 26'-WIDE)
SELF CONTAINED PMS828-01C-- 1428 SQFT

FEATURES

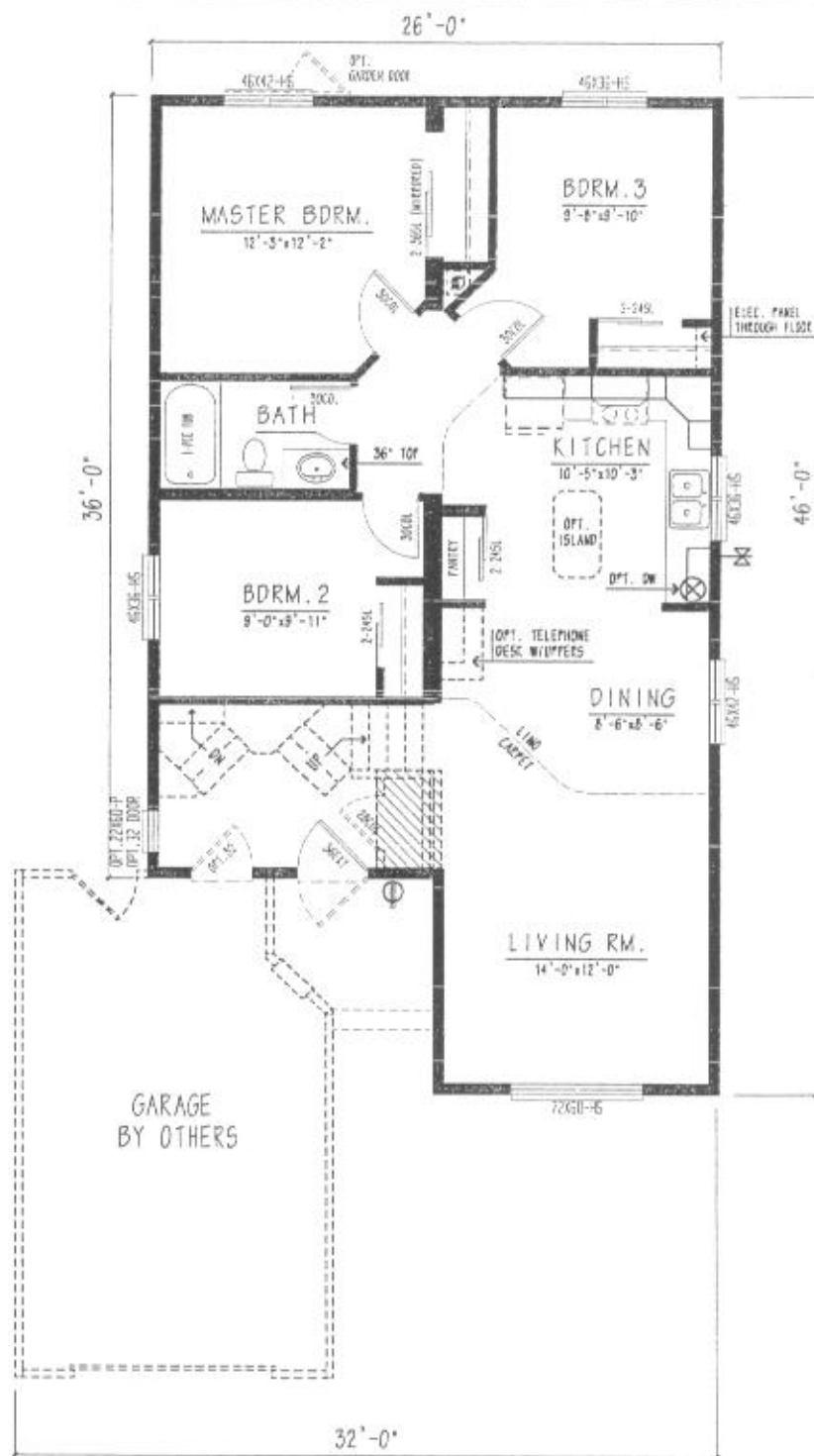
- * 3 BEDROOM - 2 BATH
- * INTERESTING DESIGN
- * OPEN LIVING SPACE
- * GREAT FOR "MOVE-UP"



ENTRY ALT. #2



ENTRY ALT. #1



SAMPLE ELEVATION

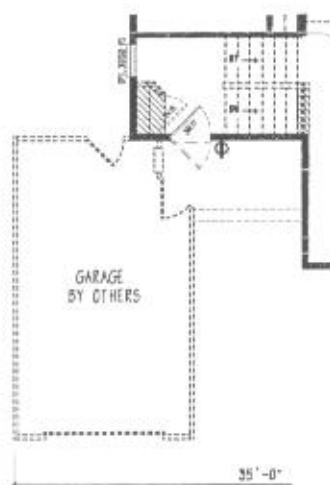
SOME ITEMS SHOWN ARE OPTIONAL OR
SUPPLIED AND INSTALLED BY OTHERS

THE PEMBROKE I (26)

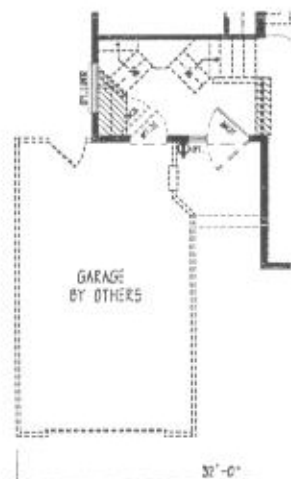
(ALSO AVAILABLE AS A 28'-WIDE)
SPLIT ENTRY PEM4626-015-- 1066 SQ. FT.

FEATURES

- # 3 BEDROOM - 1 BATH
- # GREAT USE OF SPACE
- # NARROW LOT DESIGN
- # PERFECT STARTER HOME



ENTRY ALT. #2



ENTRY ALT. #1



SAMPLE ELEVATION

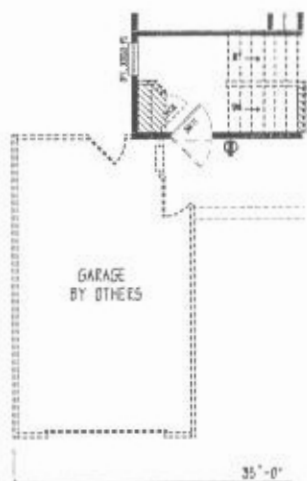
SOME ITEMS SHOWN ARE OPTIONAL OR SUPPLIED AND INSTALLED BY OTHERS

THE PEMBROKE I (28)

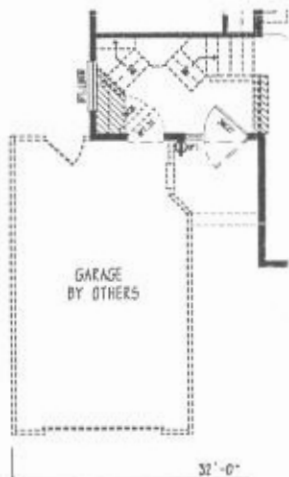
(ALSO AVAILABLE AS A 26'-WIDE)
SPLIT ENTRY PEM620-DIS-- 1148 SQFT

FEATURES

- * 3 BEDROOM - 1 BATH
- * GREAT USE OF SPACE
- * NARROW LOT DESIGN
- * PERFECT STARTER HOME



ENTRY ALT. #2



ENTRY ALT. #1



SAMPLE ELEVATION

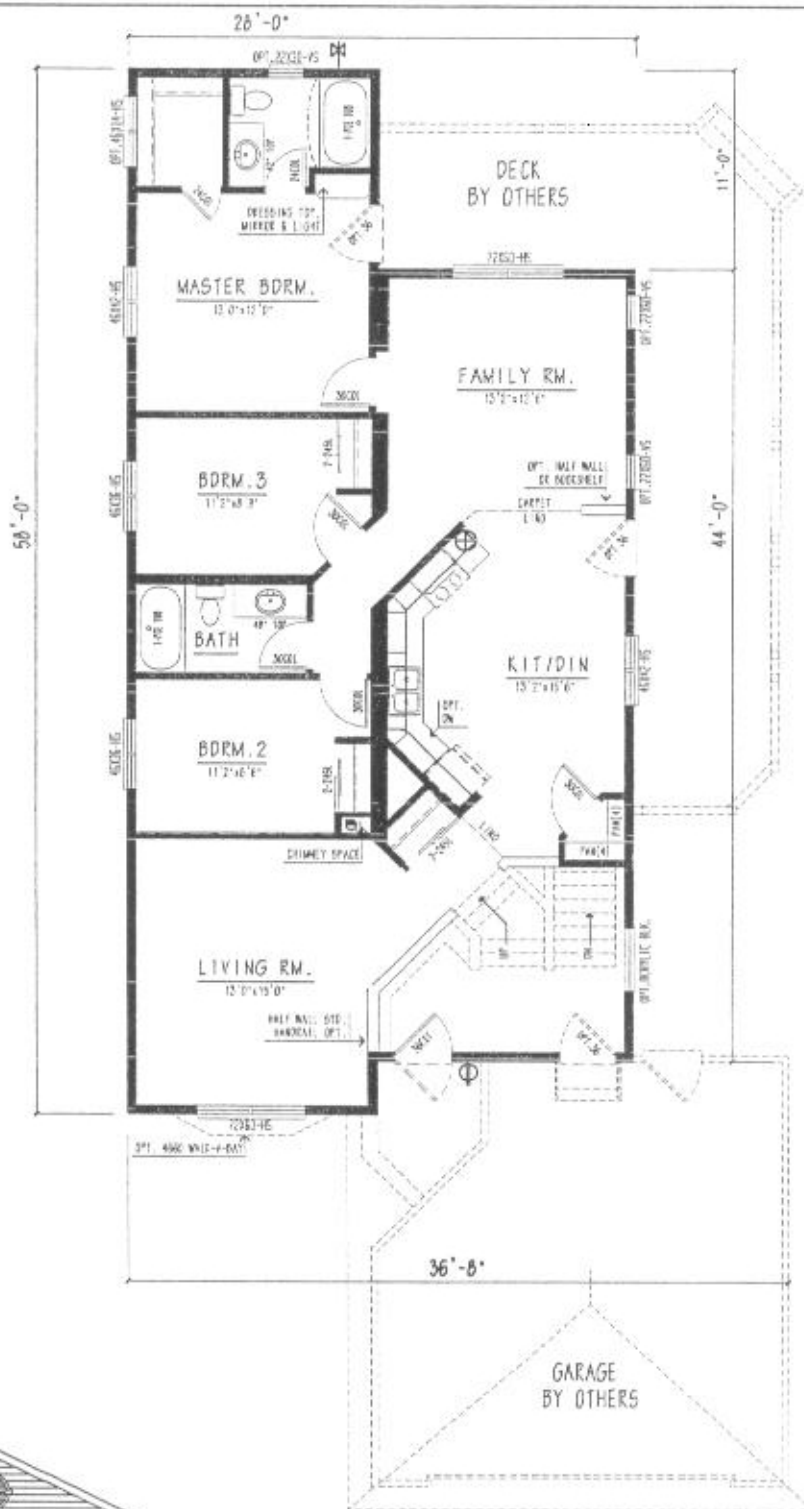
SOME ITEMS SHOWN ARE OPTIONAL OR SUPPLIED AND INSTALLED BY OTHERS

THE PEMBROKE II (28)

(ALSO AVAILABLE AS A 26'-WIDE)
SPLIT ENTRY PEM28-015-- 1234 SQFT

FEATURES

- * 3 BEDROOM - 2 BATH
- * GREAT USE OF SPACE
- * NARROW LOT DESIGN
- * PERFECT STARTER HOME



THE PEMBROKE III (28)

(ALSO AVAILABLE AS A 26'-WIDE)
SPLIT ENTRY PEM5028-015-- 1428 SQFT

FEATURES

- # 3 BEDROOM - 2 BATH
- # INTERESTING DESIGN
- # OPEN LIVING SPACE
- # GREAT FOR "MOVE-UP"

SAMPLE ELEVATION

SOME ITEMS SHOWN ARE OPTIONAL OR
SUPPLIED AND INSTALLED BY OTHERS



SOME ITEMS SHOWN ARE OPTIONAL, OR
SUPPLIED AND INSTALLED BY OTHERS

(ALSO AVAILABLE AS A 28-WIDE)
BUNGLOW (BASEMENT) PEM526-010-- 1066 SQ FT

- * 3 BEDROOM - 1 BATH
- * GREAT USE OF SPACE
- * NARROW LOT DESIGN
- * PERFECT STARTER HOME



SAMPLE ELEVATION

SOME ITEMS SHOWN ARE OPTIONAL OR
SUPPLIED AND INSTALLED BY OTHERS

THE PEMBROKE III (28)

ALSO AVAILABLE AS A 26-WIDE
BUNGALOW PEM5628-D18-- 1428 SQFT

FEATURES

- * 3 BEDROOM - 2 BATH
- * INTERESTING DESIGN
- * OPEN LIVING SPACE
- * GREAT FOR "MOVE-UP"